

A lattice determination of Sigma – Lambda mixing

R. Horsley^a, J. Najjar^b, Y. Nakamura^c, H. Perlt^d,
D. Pleiter^e, P. E. L. Rakow^f, G. Schierholz^g,
A. Schiller^d, H. Stüben^h and J. M. Zanottiⁱ

– QCDSF-UKQCD Collaboration –

^a School of Physics and Astronomy, University of Edinburgh,
Edinburgh EH9 3FD, UK

^b Institut für Theoretische Physik, Universität Regensburg,
93040 Regensburg, Germany

^c RIKEN Advanced Institute for Computational Science,
Kobe, Hyogo 650-0047, Japan

^d Institut für Theoretische Physik, Universität Leipzig,
04109 Leipzig, Germany

^e Jülich Supercomputer Centre, Forschungszentrum Jülich,
52425 Jülich, Germany

^f Theoretical Physics Division, Department of Mathematical Sciences,
University of Liverpool, Liverpool L69 3BX, UK

^g Deutsches Elektronen-Synchrotron DESY,
22603 Hamburg, Germany

^h Regionales Rechenzentrum, Universität Hamburg,
20146 Hamburg, Germany

ⁱ CSSM, Department of Physics, University of Adelaide,
Adelaide SA 5005, Australia

Abstract

Isospin breaking effects in baryon octet (and decuplet) masses are due to a combination of up and down quark mass differences and electromagnetic effects and lead to small mass splittings. Between the Sigma and Lambda this mass splitting is much larger, this being mostly due to their different wavefunctions. However when isospin is broken, there is a mixing

between these states. We describe the formalism necessary to determine the QCD mixing matrix and hence find the mixing angle and mass splitting between the Sigma and Lambda particles due to QCD effects.

1 Introduction

Mass breaking effects in hadron octets (and decuplets) are mainly due to a combination of quark mass differences and electromagnetic effects, but can also sometimes have an additional component due to mixing between the hadron states. In this article we shall be considering the baryon octet as shown in Fig. 1 where the spin $\frac{1}{2}$ baryons are plotted in the I_3 - Y plane. The particles on the (outer) ring,

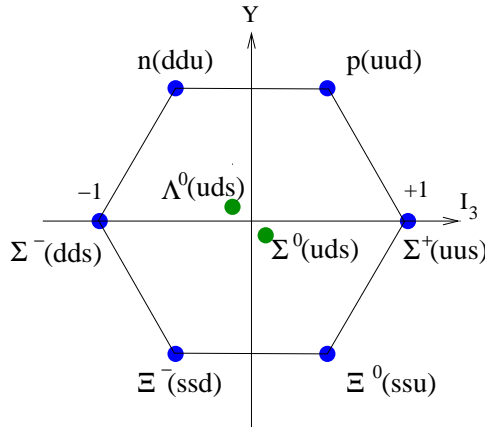


Figure 1: The lowest octet for the spin $\frac{1}{2}$ baryons plotted in the I_3 - Y plane.

namely the $n(duu)$, $p(uud)$, $\Sigma^-(dds)$, $\Sigma^+(uus)$ and $\Xi^-(ssd)$, $\Xi^0(ssu)$ all consist of combinations of aab quarks (where we shall use the notation of denoting a quark, q , by a , b , \dots which can be the up u , down d or strange s quark). a here are the flavour doubly represented quarks, while b is the flavour singly represented quark. For $u-d$ quark mass differences these ‘isospin breaking effects’ are small. Examples for the lowest baryon octet are the $n-p$, $\Sigma^- - \Sigma^+$ and $\Xi^- - \Xi^0$ mass differences. In [1] we investigated the hadronic QCD contribution to these isospin breaking splittings using lattice techniques. In this article we extend these results to the $\Sigma^0 - \Lambda^0$ baryon octet masses. The method developed here for the $\Sigma^0 - \Lambda^0$ mass splitting will automatically encompass the other splittings.

The Σ^0 and Λ^0 masses¹ are accurately known; from the Particle Data Group [2] we have

$$M_{\Sigma^0}^{\text{exp}} = 1.192642(24) \text{ GeV}, \quad M_{\Lambda^0}^{\text{exp}} = 1.115683(6) \text{ GeV}, \quad (1)$$

¹We use Σ to stand for the unmixed Sigma particle (pure isospin 1) and Σ^0 to denote the physical Sigma particle, with mixed isospin. Similarly Λ denotes the pure isospin 0 state, and Λ^0 the physical Lambda particle.

giving a mass splitting of

$$(M_{\Sigma^0} - M_{\Lambda^0})^{\text{exp}} = 76.959(23) \text{ MeV}. \quad (2)$$

This is very much larger than the other mass splittings mentioned above, which are all of the order of a few MeV. It is also more complicated than other mass splittings as while both baryons have the same quark content, namely u, d, s , most of the mass difference is due to their different wavefunctions. However there will also be additional mixing between these states. This will be apparent when we later consider $\Sigma(l'l's)$ and $\Lambda(l'l's)$ where l and l' are distinct quarks, but mass degenerate, which already has this large mass splitting.

Understanding how this mixing works will be useful for understanding other mixing cases, such as $\eta-\eta'$ or $\omega-\phi$ meson mixing, for which lattice simulations are considerably more difficult as there are computationally intensive disconnected terms in the correlation function to consider, [3, 4, 5, 6]. In these latter cases a state at the centre of the octet (the pure ' η_8 ' octet state) mixes with a further singlet state, ' η_1 '. The case here of $\Sigma^0 - \Lambda^0$ mixing is a little different as the particles have the same quantum numbers but now lie in the same octet (as shown in Fig. 1). In Fig. 2 we sketch the expected situation for the Lambda and

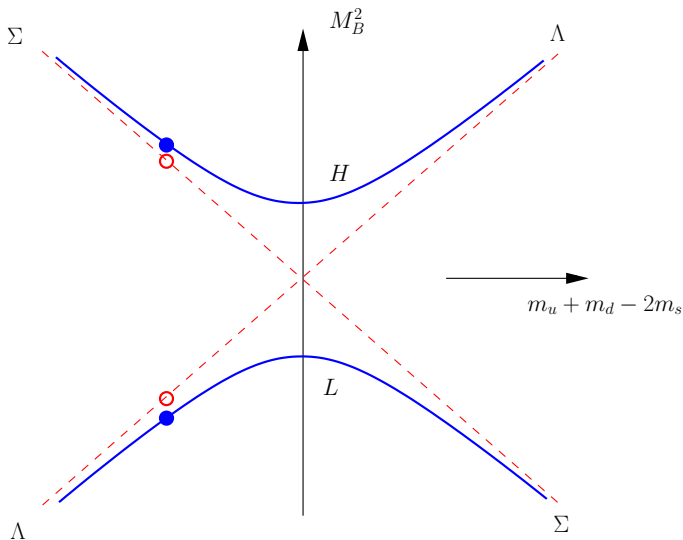


Figure 2: A sketch of the heavy, H , and light, L , baryon (masses)² against $m_u + m_d - 2m_s$ for fixed $m_u - m_d$. The mass splitting between the Sigma and Lambda masses in the isospin limit ($m_u = m_d$) is given by the difference between the (red) circles; if $m_u \neq m_d$ then there is an additional mass difference due to mixing, the filled (blue) circles. Further explanation of the figure is given in the text.

Sigma hadrons, plotting M_B^2 against $m_u + m_d - 2m_s$. The lines represent lines of constant $m_u - m_d$, with the (red) dashed lines for $m_u - m_d = 0$, while the

(blue) lines are for $m_u - m_d \neq 0$. The central point is the quark mass symmetric point, when all quark masses are the same, when there is no difference between the Lambda and Sigma masses. In the isospin limit, when $m_u = m_d \neq m_s$ we sit at the points denoted by an open (red) circle. The mass splitting between the Sigma and Lambda particles is given by the vertical difference between these points.

However if $m_u \neq m_d$ then we have mixing between the ‘Lambda’ and ‘Sigma’ particles, as also depicted in the figure by (blue) lines. The physical Σ^0 and Λ^0 masses are now given by the (blue) filled circles. We see that there is then an additional mass splitting.

As can also be seen from the figure, depending on the numerical values of the quark masses, the physical Σ^0 and Λ^0 masses can have a larger or smaller component of the original ‘ Σ ’ and ‘ Λ ’ particles. To avoid confusion we shall call in future the lower branch the ‘Light’ or L branch with associated mass M_L , while the upper is the ‘Heavy’ or H branch has mass M_H . For example in the isospin limit $m_u = m_d \equiv m_l$ we have

$$M_H = \begin{cases} M_\Sigma & m_l < m_s \\ M_\Lambda & m_l > m_s \end{cases}, \quad M_L = \begin{cases} M_\Lambda & m_l < m_s \\ M_\Sigma & m_l > m_s \end{cases}. \quad (3)$$

At the physical point, denoted by a $*$, we set

$$M_{\Sigma^0} = M_H^*, \quad M_{\Lambda^0} = M_L^*. \quad (4)$$

In the following we shall denote the pure octet, i.e. unmixed Σ and Λ mass states, by the Hermitian matrix

$$\begin{pmatrix} M_{\Sigma\Sigma}^2 & M_{\Sigma\Lambda}^2 \\ M_{\Lambda\Sigma}^2 & M_{\Lambda\Lambda}^2 \end{pmatrix}, \quad (5)$$

while the mixed mass states will be denoted by M_H^2, M_L^2 . We shall determine the mixing angle, $\theta_{\Sigma\Lambda}$, which rotates eq. (5) with rotation matrix

$$R = \begin{pmatrix} \cos \theta_{\Sigma\Lambda} & e^{i\phi_{\Sigma\Lambda}} \sin \theta_{\Sigma\Lambda} \\ -e^{-i\phi_{\Sigma\Lambda}} \sin \theta_{\Sigma\Lambda} & \cos \theta_{\Sigma\Lambda} \end{pmatrix}, \quad (6)$$

to the diagonal form

$$\begin{pmatrix} M_H^2 & 0 \\ 0 & M_L^2 \end{pmatrix}, \quad (7)$$

where $\phi_{\Sigma\Lambda}$ is the phase. Note that for the general symmetry arguments used here it does not matter whether they are applied to the hadron mass matrix, or some function of the mass matrix. We have chosen the quadratic form (see section 2.1).

Although we shall discuss mixing between the Λ and Σ particles induced by quark mass differences, we neglect electromagnetic effects, which will also

contribute mixing of roughly the same order of magnitude as isospin breaking effects. Thus we shall consider ‘pure’ QCD effects only. The method also applies to mixing of $J^P = \frac{1}{2}^+$ baryons in the singly-charmed sector. For csu (or csd) baryons the hadronic mixing will be far larger than electromagnetic effects.

Previous determinations of $\Sigma - \Lambda$ mixing include using the quark model, e.g. [7], chiral perturbation theory, e.g. [8] and from ‘Sum Rule’ methods, e.g. [9, 10].

The plan of this article is as follows. In the next section, section 2, we first discuss in more detail the calculational strategy that we employ here. In particular as summarised in section 2.3, and discussed further in Appendices A and B we make a $SU(3)$ flavour expansion about a point with degenerate mass u , d and s quarks. Section 3 then gives the $\Sigma - \Lambda$ mass mixing expansion up to NLO (i.e. next-to-leading order or quadratic in the quark masses). We have actually computed the expansion to NNLO (i.e. next-next-to-leading order), but as we only use these to help to estimate systematic errors, the complete expansions are relegated to Appendix C. We also show numerical simulations with two mass degenerate sea quark masses as sufficient to determine the expansions coefficients also for the non-degenerate quark mass case. In section 4 we modify the expansion, to consider ratios, rather than lattice or scale dependent quantities. Some comments on matrix elements are given in section 5. Our numerical simulations are then detailed in section 6 and correlation functions and determination of the expansion coefficients are given in sections 6.1 and 6.2, together with results for mass degenerate quarks. Finally our results and discussion are given in section 7.

2 The $SU(3)$ flavour expansion

2.1 Mass matrix symmetries

When all three quarks have the same mass, an $SU(3)$ transformation U on the quark fields is a symmetry of the action, it leaves the quark mass matrix, \mathcal{M} unchanged. We, however, are more interested in what happens in the case of unequal quark masses

$$\mathcal{M} = \begin{pmatrix} m_u & 0 & 0 \\ 0 & m_d & 0 \\ 0 & 0 & m_s \end{pmatrix}, \quad (8)$$

when we make an $SU(3)$ transformation

$$\mathcal{M}' = U\mathcal{M}U^\dagger. \quad (9)$$

Although this changes the quark matrix, it does not really change the physical situation. The eigenvalues of \mathcal{M}' are the same as those of \mathcal{M} , only the eigenvectors have been changed. Likewise, the mass spectrum of composite particles such as the mesons and baryons, won’t change, only the eigenvectors change.

This is easiest to see if the transformation U is simply a permutation. For example, if we interchange m_d and m_s we still get the same set of baryon masses, (see Fig. 1); all that changes is the names we give them. In this case, M_n and M_{Ξ^0} would be interchanged, as would M_p and M_{Ξ^+} and so on. A rotation of the quark mass matrix simply leads to a corresponding rotation of the baryon mass matrix, M ,

$$M(UMU^\dagger) = UM(\mathcal{M})U^\dagger. \quad (10)$$

The U matrices in eq. (9) belong to a 3×3 matrix representation of $SU(3)$, while the U matrices in eq. (10) belong to an 8×8 representation of the same group.

We can see from eq. (10) that the mass matrix and the (mass matrix)² both transform in the same way

$$M^2 \rightarrow (UMU^\dagger)(UMU^\dagger) = UM^2U^\dagger, \quad (11)$$

(where, as always, M^2 is short-hand for MM). Therefore, as far as symmetry arguments go, it makes no difference whether we discuss the hadron mass matrix, or the mass-squared matrix. Note also that we can see from eq. (11) that the eigenvectors of M and of M^2 are the same.

We shall consider in future the $SU(3)$ flavour breaking expansion of M^2 rather than M , [8]. Thus we set

$$M^2 = \begin{pmatrix} M_n^2 & 0 & 0 & 0 & 0 & 0 & 0 & 0 \\ 0 & M_p^2 & 0 & 0 & 0 & 0 & 0 & 0 \\ 0 & 0 & M_{\Sigma^-}^2 & 0 & 0 & 0 & 0 & 0 \\ 0 & 0 & 0 & M_{\Sigma\Sigma}^2 & M_{\Sigma\Lambda}^2 & 0 & 0 & 0 \\ 0 & 0 & 0 & M_{\Lambda\Sigma}^2 & M_{\Lambda\Lambda}^2 & 0 & 0 & 0 \\ 0 & 0 & 0 & 0 & 0 & M_{\Sigma^+}^2 & 0 & 0 \\ 0 & 0 & 0 & 0 & 0 & 0 & M_{\Xi^-}^2 & 0 \\ 0 & 0 & 0 & 0 & 0 & 0 & 0 & M_{\Xi^0}^2 \end{pmatrix}. \quad (12)$$

The reason is that as in [1] we have found again that better numerical fits in the quark mass range considered are obtained using the hadron mass matrix squared.

In Appendix A an explicit example for the transformation $u \leftrightarrow d$ is given.

2.2 The $\Sigma - \Lambda$ mass matrix

2.2.1 Derivation

The $SU(3)$ flavour expansion classifies mass polynomials according to the S_3 permutation group and the $SU(3)$ flavour group. S_3 is the symmetry group of an equilateral triangle, C_{3v} . This group has 3 irreducible representations, [11], two different singlets, A_1 and A_2 and a doublet E , with elements E^+ and E^- . Some details of this group and its representations are given in Appendix A of [12].

n	p	Σ^-	Σ	Λ	Σ^+	Ξ^-	Ξ^0	S_3	$SU(3)$
1	1	1	1	1	1	1	1	A_1	1
-1	-1	0	0	0	0	1	1	E^+	8_a
-1	1	-2	0	0	2	-1	1	E^-	8_a
1	1	-2	-2	2	-2	1	1	E^+	8_b
-1	1	0	mix		0	1	-1	E^-	8_b
1	1	1	-3	-3	1	1	1	A_1	27
1	1	-2	3	-3	-2	1	1	E^+	27
-1	1	0	mix		0	1	-1	E^-	27
1	-1	-1	0	0	1	1	-1	A_2	$10, \overline{10}$
0	0	0	mix		0	0	0	A_2	$10, \overline{10}$

Table 1: Mass matrix contributions for octet baryons, classified by permutation and $SU(3)$ symmetry. (See Table V in [12].)

In [12] we classified the 10 matrices (N_i , $i = 1, \dots, 10$) which can contribute to the octet baryon mass matrix eq. (12) according to their permutation, S_3 and $SU(3)$ symmetry, see Table 1. The compact notation of Table 1 gives just the diagonal elements (the rows/columns being denoted by n, p, \dots). From Table 1 we see that seven of the matrices are diagonal, they can be read off directly from the table. For example the first row gives the 8×8 matrix: $\text{diag}(1, 1, 1, 1, 1, 1, 1, 1)$. The table also contains three matrices which mix the Σ and Λ , the fifth, eighth rows which mix at the quadratic quark mass level and the tenth row which mixes with the cubic terms. All the matrices are explicitly listed in Appendix B. Thus we write

$$M^2 = \sum_{i=1}^{10} K_i N_i, \quad (13)$$

where K_i are some functions of the quark masses (to be determined).

We now need the three non-diagonal matrices in full. From Appendix B they are N_5 , N_8 and N_{10} . We thus have

$$E^- \quad 8_b \quad \begin{pmatrix} -1 & 0 & 0 & 0 & 0 & 0 & 0 & 0 & 0 \\ 0 & 1 & 0 & 0 & 0 & 0 & 0 & 0 & 0 \\ 0 & 0 & 0 & 0 & 0 & 0 & 0 & 0 & 0 \\ 0 & 0 & 0 & 0 & \frac{2}{\sqrt{3}} & 0 & 0 & 0 & 0 \\ 0 & 0 & 0 & \frac{2}{\sqrt{3}} & 0 & 0 & 0 & 0 & 0 \\ 0 & 0 & 0 & 0 & 0 & 0 & 0 & 0 & 0 \\ 0 & 0 & 0 & 0 & 0 & 0 & 1 & 0 & 0 \\ 0 & 0 & 0 & 0 & 0 & 0 & 0 & 0 & -1 \end{pmatrix} \quad (14)$$

$$E^- \quad 27 \quad \begin{pmatrix} -1 & 0 & 0 & 0 & 0 & 0 & 0 & 0 \\ 0 & 1 & 0 & 0 & 0 & 0 & 0 & 0 \\ 0 & 0 & 0 & 0 & 0 & 0 & 0 & 0 \\ 0 & 0 & 0 & 0 & -\sqrt{3} & 0 & 0 & 0 \\ 0 & 0 & 0 & -\sqrt{3} & 0 & 0 & 0 & 0 \\ 0 & 0 & 0 & 0 & 0 & 0 & 0 & 0 \\ 0 & 0 & 0 & 0 & 0 & 0 & 1 & 0 \\ 0 & 0 & 0 & 0 & 0 & 0 & 0 & -1 \end{pmatrix} \quad (15)$$

$$A_2 \quad 10, \overline{10} \quad \begin{pmatrix} 0 & 0 & 0 & 0 & 0 & 0 & 0 & 0 \\ 0 & 0 & 0 & 0 & 0 & 0 & 0 & 0 \\ 0 & 0 & 0 & 0 & 0 & 0 & 0 & 0 \\ 0 & 0 & 0 & 0 & -i & 0 & 0 & 0 \\ 0 & 0 & 0 & i & 0 & 0 & 0 & 0 \\ 0 & 0 & 0 & 0 & 0 & 0 & 0 & 0 \\ 0 & 0 & 0 & 0 & 0 & 0 & 0 & 0 \\ 0 & 0 & 0 & 0 & 0 & 0 & 0 & 0 \end{pmatrix}. \quad (16)$$

We are now ready to write down the general form of the $\Sigma - \Lambda$ mass matrix. From Table 1 we see that the A_1 terms always make equal contributions to the Σ and Λ ; and the E^+ terms always make opposite contributions to the Σ and Λ . From eqs. (14) and (15) we see that E^- terms contribute a real symmetric mixing term, and from eq. (16) that A_2 terms contribute an imaginary, antisymmetric mixing. The allowed form of the $\Sigma - \Lambda$ mass matrix eq. (5) is therefore

$$\begin{pmatrix} M_{\Sigma\Sigma}^2 & M_{\Sigma\Lambda}^2 \\ M_{\Lambda\Sigma}^2 & M_{\Lambda\Lambda}^2 \end{pmatrix} \quad (17)$$

$$= P_{A_1} \begin{pmatrix} 1 & 0 \\ 0 & 1 \end{pmatrix} + P_{E^+} \begin{pmatrix} 1 & 0 \\ 0 & -1 \end{pmatrix} + P_{E^-} \begin{pmatrix} 0 & 1 \\ 1 & 0 \end{pmatrix} + P_{A_2} \begin{pmatrix} 0 & -i \\ i & 0 \end{pmatrix},$$

where P_G means a function of the quark masses with the symmetry G under the S_3 permutation group.

We can also give a permutation argument for eq. (17). The Σ and Λ form an E representation of the permutation group, with the pure Σ even under $u \leftrightarrow d$ and the Λ odd. If $m_u \neq m_d$ there will be mixing between these states. Because the Σ and Λ have opposite behaviours under $u \leftrightarrow d$ exchange, the mass matrix for the $\Sigma - \Lambda$ system must have the behaviour

$$\begin{pmatrix} \text{even} & \text{odd} \\ \text{odd} & \text{even} \end{pmatrix}, \quad (18)$$

under the operation $u \leftrightarrow d$. The possible symmetries of the terms in the mass matrix are given by

$$E \otimes E = A_1 \oplus E \oplus A_2. \quad (19)$$

The A_1 and the E^+ member of the E doublet are even under $u \leftrightarrow d$, so they must be responsible for the diagonal part of the mass matrix. The mixing terms in the mass matrix are odd, so they must come from E^- and A_2 expressions.

From the above discussion we note that the formalism includes the no-mixing case when $m_u = m_d$; we simply set

$$P_{E^-} = 0, \quad P_{A_2} = 0, \quad (20)$$

and the upper component of eq. (17), now in a diagonal form, gives the degenerate mass of the Sigma baryons: $\Sigma \equiv (\Sigma^-, \Sigma^0, \Sigma^+)$ (which upon interchanging the quarks also gives the other baryon masses on the outer ring $N \equiv (n, p)$, $\Xi \equiv (\Xi^-, \Xi^0)$), while the lower component gives Λ .

2.2.2 Diagonalisation

We now diagonalise the 2×2 (mass matrix)² of eq. (17) giving eigenvalues

$$\begin{aligned} M_H^2 &= P_{A_1} + \sqrt{P_{E^+}^2 + P_{E^-}^2 + P_{A_2}^2} \\ M_L^2 &= P_{A_1} - \sqrt{P_{E^+}^2 + P_{E^-}^2 + P_{A_2}^2}, \end{aligned} \quad (21)$$

while if the eigenvectors are written as

$$e_H = \begin{pmatrix} \cos \theta_{\Sigma\Lambda} \\ e^{-i\phi_{\Sigma\Lambda}} \sin \theta_{\Sigma\Lambda} \end{pmatrix}, \quad e_L = \begin{pmatrix} -e^{i\phi_{\Sigma\Lambda}} \sin \theta_{\Sigma\Lambda} \\ \cos \theta_{\Sigma\Lambda} \end{pmatrix}, \quad (22)$$

(cf eq. (6)) we have

$$\tan 2\theta_{\Sigma\Lambda} = \frac{\sqrt{P_{E^-}^2 + P_{A_2}^2}}{P_{E^+}}, \quad \tan \phi_{\Sigma\Lambda} = \frac{P_{A_2}}{P_{E^-}}, \quad (23)$$

for the mixing angle, $\theta_{\Sigma\Lambda}$, and phase, $\phi_{\Sigma\Lambda}$. Note that eq. (21) trivially gives the H and L masses and also the mass difference $M_H - M_L$.

Alternatively the P_G coefficients have some nice links to the H and L masses. P_{A_1} gives the average (mass)²

$$\frac{1}{2} (M_H^2 + M_L^2) = P_{A_1}, \quad (24)$$

while the other three coefficients contribute symmetrically to the splitting of the two states

$$\frac{1}{2} (M_H^2 - M_L^2) = \sqrt{P_{E^+}^2 + P_{E^-}^2 + P_{A_2}^2}. \quad (25)$$

2.3 The $SU(3)$ flavour expansion

Our strategy, as discussed in detail in [12] is to start from a point in the quark mass plane with all three sea quark masses equal,

$$m_u = m_d = m_s \equiv m_0, \quad (26)$$

and extrapolate towards the physical point, denoted by a star, $*$, keeping the average sea quark mass

$$\bar{m} = \frac{1}{3}(m_u + m_d + m_s), \quad (27)$$

constant at the value m_0 . As we approach the physical point, the u and d quarks become lighter, but the s quark becomes heavier. Pions are decreasing in mass, but K and η increase in mass as we approach the physical point. Keeping \bar{m} constant greatly reduces the number of mass polynomials which can occur in Taylor expansions of physical quantities within an $SU(3)$ multiplet. As we are expanding about the symmetric point, it is useful to introduce the notation

$$\delta m_q \equiv m_q - \bar{m}, \quad q = u, d, s. \quad (28)$$

Note that it follows from the definition that

$$\delta m_u + \delta m_d + \delta m_s = 0, \quad (29)$$

so we could eliminate one of the δm_q s. However we shall often keep all three terms as we can then write some expressions in a more obviously symmetrical form.

We can also generalise the $SU(3)$ flavour expansion to the case when the mass of the valence quarks can be different to the mass of the sea quarks, i.e. we leave the ‘unitary line’. We call this the ‘partially quenched’ or PQ case. To do this we introduce

$$\delta \mu_q = \mu_q - \bar{m}, \quad q = u, d, s, \quad (30)$$

where μ_q is the valence quark mass. In distinction to the sea quarks there is no restriction of the form eq. (29) on the values of the valence quark masses. We shall give our results in this slightly more general case and then specialise to the unitary case $\delta \mu_q \rightarrow \delta m_q$ and then to the physical point $\delta m_q \rightarrow \delta m_q^*$. This generalisation will prove to be useful for the numerical determination of the $SU(3)$ expansion coefficients.

In the following we shall give $SU(3)$ flavour symmetry breaking expansions up to cubic terms in the quark’s mass, i.e. to $O(\delta \mu_q^3)$ (in both the sea and valence quarks). We call this the ‘next to next to leading order’ or NNLO. However practically we shall see that the cubic terms contribute a small amount, so we shall regard this order as mainly being ‘control’ on the NLO results (for which analytic results are also given). In Table 2 we give the results to NLO.

Polynomial	S_3	$SU(3)$
1	A_1	1
$\delta\mu_u + \delta\mu_d + \delta\mu_s$	A_1	1
$2\delta\mu_s - \delta\mu_u - \delta\mu_d$	E^+	8
$\delta\mu_u - \delta\mu_d$	E^-	8
$(\delta\mu_u + \delta\mu_d + \delta\mu_s)^2$	A_1	1
$(\delta\mu_u + \delta\mu_d + \delta\mu_s)(2\delta\mu_s - \delta\mu_u - \delta\mu_d)$	E^+	8
$(\delta\mu_u + \delta\mu_d + \delta\mu_s)(\delta\mu_u - \delta\mu_d)$	E^-	8
$(\delta\mu_s - \delta\mu_u)^2 + (\delta\mu_s - \delta\mu_d)^2 + (\delta\mu_u - \delta\mu_d)^2$	A_1	1 27
$(\delta\mu_s - \delta\mu_u)^2 + (\delta\mu_s - \delta\mu_d)^2 - 2(\delta\mu_u - \delta\mu_d)^2$	E^+	8 27
$(\delta\mu_s - \delta\mu_u)^2 - (\delta\mu_s - \delta\mu_d)^2$	E^-	8 27
$\delta m_u^2 + \delta m_d^2 + \delta m_s^2$	A_1	1 27

Table 2: All the quark-mass polynomials needed for partially quenched masses, classified by symmetry properties. The table includes entries up to $O(\delta\mu_q^2)$. (Table XIV of [12].)

3 The $\Sigma - \Lambda$ mixing mass formula

3.1 Expansion of the P_G coefficients

We now return to the evaluation of the $\Sigma - \Lambda$ mass matrix as discussed in section 2.2 and demand that under all $SU(3)$ transformations

$$\mathcal{M} \rightarrow \mathcal{M}' = U\mathcal{M}U^\dagger \quad \Leftrightarrow \quad M^2(\mathcal{M}') = UM^2(\mathcal{M})U^\dagger. \quad (31)$$

Physically there is no change; just a relabelling of the states. For example $m_d \leftrightarrow m_s$ is equivalent to relabelling $M_n \leftrightarrow M_{\Xi^0}, \dots$

The most general form of the partially quenched octet baryon mass matrix, for $1 + 1 + 1$ valence and sea quarks, up to order $\delta\mu_q^3$, in the case where \bar{m} is held constant can now be determined. In Appendix B we illustrate explicitly the computation to LO of the $SU(3)$ flavour expansion and $\Sigma - \Lambda$ mixing. We find that the coefficients² in the $\Sigma - \Lambda$ mixing matrix, eq. (17), are

$$\begin{aligned}
P_{A_1} = & M_0^2 + 3A_1\delta\bar{m} \\
& + \frac{1}{6}B_0(\delta m_u^2 + \delta m_d^2 + \delta m_s^2) + B_1(\delta\mu_u^2 + \delta\mu_d^2 + \delta\mu_s^2) \\
& + \frac{1}{4}(B_3 + B_4) \left[(\delta\mu_s - \delta\mu_u)^2 + (\delta\mu_s - \delta\mu_d)^2 + (\delta\mu_u - \delta\mu_d)^2 \right] \\
& + C_0\delta m_u\delta m_d\delta m_s + 3C_1\delta\bar{m}(\delta m_u^2 + \delta m_d^2 + \delta m_s^2) \\
& - 4(C_5 + C_7)\delta\mu_u\delta\mu_d\delta\mu_s + \frac{1}{2}Q_1(\delta\mu_s + \delta\mu_u)(\delta\mu_s + \delta\mu_d)(\delta\mu_u + \delta\mu_d)
\end{aligned}$$

²Note that A_1 and A_2 are used both for the S_3 representation and the expansion coefficient. Hopefully this will cause no confusion in the following.

$$\begin{aligned}
& + \frac{27}{4}Q_2(\delta\mu_s - \delta\bar{\mu})(\delta\mu_u - \delta\bar{\mu})(\delta\mu_d - \delta\bar{\mu}), \\
P_{E^+} = & \frac{3}{2}A_2(\delta\mu_s - \delta\bar{\mu}) \\
& + \frac{1}{2}B_2(2\delta\mu_s^2 - \delta\mu_u^2 - \delta\mu_d^2) \\
& + \frac{1}{4}(B_3 - B_4) \left[(\delta\mu_s - \delta\mu_u)^2 + (\delta\mu_s - \delta\mu_d)^2 - 2(\delta\mu_u - \delta\mu_d)^2 \right] \\
& + \frac{3}{2}C_2(\delta\mu_s - \delta\bar{\mu})(\delta m_u^2 + \delta m_d^2 + \delta m_s^2) + 6(C_3 - C_4)(\delta\mu_s - \delta\bar{\mu})\delta\bar{\mu}^2 \\
& + \frac{1}{6}Q_3 \left[(\delta\mu_s - \delta\mu_u)^2 + (\delta\mu_s - \delta\mu_d)^2 - 2(\delta\mu_u - \delta\mu_d)^2 \right] \delta\bar{\mu} \\
& + \frac{1}{8}Q_4(\delta\mu_s - \delta\bar{\mu})(\delta\mu_u^2 + \delta\mu_d^2 + \delta\mu_s^2 - 3\delta\bar{\mu}^2), \\
P_{E^-} = & \frac{\sqrt{3}}{2}A_2(\delta\mu_d - \delta\mu_u) \\
& + \frac{\sqrt{3}}{2}B_2(\delta\mu_d^2 - \delta\mu_u^2) + \frac{\sqrt{3}}{4}(B_3 - B_4) \left[(\delta\mu_s - \delta\mu_d)^2 - (\delta\mu_s - \delta\mu_u)^2 \right] \\
& + \frac{\sqrt{3}}{2}C_2(\delta\mu_d - \delta\mu_u)(\delta m_u^2 + \delta m_d^2 + \delta m_s^2) + 2\sqrt{3}(C_3 - C_4)(\delta\mu_d - \delta\mu_u)\delta\bar{\mu}^2 \\
& + \frac{1}{8\sqrt{3}}Q_4(\delta\mu_d - \delta\mu_u)(\delta\mu_u^2 + \delta\mu_d^2 + \delta\mu_s^2 - 3\delta\bar{\mu}^2) \\
& - \frac{\sqrt{3}}{2}Q_3(\delta\mu_d - \delta\mu_u)(\delta\mu_s - \delta\bar{\mu})\delta\bar{\mu}, \\
P_{A_2} = & C_9(\delta\mu_s - \delta\mu_u)(\delta\mu_s - \delta\mu_d)(\delta\mu_u - \delta\mu_d), \tag{32}
\end{aligned}$$

where

$$\begin{aligned}
Q_1 & \equiv 2C_3 + C_5 + C_7 \\
Q_2 & \equiv C_5 - C_6 + C_7 + C_8 \\
Q_3 & \equiv 4(C_3 - C_4) + 3(C_5 - C_7) \\
Q_4 & \equiv 2(C_3 - C_4) + 3(C_5 - C_7) - 9(C_6 + C_8), \tag{33}
\end{aligned}$$

and

$$\delta\bar{\mu} \equiv \frac{1}{3}(\delta\mu_u + \delta\mu_d + \delta\mu_s). \tag{34}$$

We can check that all the polynomials that occur here are polynomials of the appropriate symmetry from Table 2 (i.e. Table XIV of [12]), or linear combinations of those polynomials. For example for E^+ we have written

$$\begin{aligned}
\frac{1}{2}(2\delta\mu_s^2 - \delta\mu_u^2 - \delta\mu_d^2) & = \frac{1}{3}(\delta\mu_u + \delta\mu_d + \delta\mu_s)(2\delta\mu_s - \delta\mu_u - \delta\mu_d) \\
& + \frac{1}{6}((\delta\mu_s - \delta\mu_u)^2 + (\delta\mu_s - \delta\mu_d)^2 - 2(\delta\mu_u - \delta\mu_d)^2). \tag{35}
\end{aligned}$$

P_{E^+} and P_{E^-} form a doublet, i.e. they are related by S_3 symmetry, and involve the same parameters.

Using these expansions eqs. (21) and (23) now give the H and L masses, together with the mixing angle $\theta_{\Sigma\Lambda}$ and phase $\phi_{\Sigma\Lambda}$. Note that in the unitary limit $\delta\mu_q \rightarrow \delta m_q$ these expressions simplify greatly

$$\begin{aligned}
P_{A_1} = & M_0^2 + \frac{1}{12}(2B_0 + 12B_1 + 9B_3 + 9B_4)(\delta m_u^2 + \delta m_d^2 + \delta m_s^2) \\
& + \frac{1}{4}(4C_0 - 16C_5 - 16C_7 - 16Q_1 + 27Q_2)\delta m_u\delta m_d\delta m_s
\end{aligned}$$

$$\begin{aligned}
P_{E^+} &= \frac{3}{2}A_2\delta m_s + \frac{1}{8}(2B_2 + 3B_3 - 3B_4) \left[3\delta m_s^2 - (\delta m_u - \delta m_d)^2 \right] \\
&\quad + \frac{1}{8}(12C_2 + Q_4)\delta m_s(\delta m_u^2 + \delta m_d^2 + \delta m_s^2) \\
P_{E^-} &= \frac{\sqrt{3}}{2}A_2(\delta m_d - \delta m_u) + \frac{\sqrt{3}}{4}(2B_2 + 3B_3 - 3B_4)\delta m_s(\delta m_u - \delta m_d) \\
&\quad + \frac{1}{8\sqrt{3}}(12C_2 + Q_4)(\delta m_u - \delta m_d)(\delta m_u^2 + \delta m_d^2 + \delta m_s^2) \\
P_{A_2} &= C_9(\delta m_s - \delta m_u)(\delta m_s - \delta m_d)(\delta m_u - \delta m_d). \tag{36}
\end{aligned}$$

3.2 Mass formulae, octet hadrons, 2 + 1 case

Let us now go to the equal mass valence up and down quark limit, i.e.

$$\delta\mu_u = \delta\mu_d \equiv \delta\mu_l, \tag{37}$$

then $P_{E^-} = 0 = P_{A_2}$ (and P_{A_1}, P_{E^+} simplify) which means that $\theta_{\Sigma\Lambda} = 0$, i.e. there is no $\Sigma - \Lambda$ mixing, eq. (17) is already diagonal and so

$$M_\Sigma^2 = P_{A_1} + P_{E^+}, \quad M_\Lambda^2 = P_{A_1} - P_{E^+}, \tag{38}$$

with³ $A_2 > 0$.

However as there is now no mixing then the mass formula must also automatically describe the Σ^+, Σ^- and hence all the ‘outer’ baryons, with flavour structure aab , eq. (12). Replacing $\delta\mu_l$ by $\delta\mu_a$ and $\delta\mu_s$ by $\delta\mu_b$ we find

$$\begin{aligned}
M_\Sigma^2(aab) &\equiv M_\Sigma^2(aa'b) \\
&= M_0^2 + A_1(2\delta\mu_a + \delta\mu_b) + A_2(\delta\mu_b - \delta\mu_a) \\
&\quad + \frac{1}{6}B_0(\delta m_u^2 + \delta m_d^2 + \delta m_s^2) \\
&\quad + B_1(2\delta\mu_a^2 + \delta\mu_b^2) + B_2(\delta\mu_b^2 - \delta\mu_a^2) + B_3(\delta\mu_b - \delta\mu_a)^2 \\
&\quad + C_0\delta m_u\delta m_d\delta m_s \\
&\quad + [C_1(2\delta\mu_a + \delta\mu_b) + C_2(\delta\mu_b - \delta\mu_a)](\delta m_u^2 + \delta m_d^2 + \delta m_s^2) \\
&\quad + C_3(\delta\mu_a + \delta\mu_b)^3 + C_4(\delta\mu_a + \delta\mu_b)^2(\delta\mu_a - \delta\mu_b) \\
&\quad + C_5(\delta\mu_a + \delta\mu_b)(\delta\mu_a - \delta\mu_b)^2 + C_6(\delta\mu_a - \delta\mu_b)^3. \tag{39}
\end{aligned}$$

The notation used here is meant to indicate that a, a' (and a'') are distinct quarks (in the baryon wavefunction), but are mass degenerate, i.e. $\mu_a = \mu_{a'} (= \mu_{a''})$ ⁴ This agrees with our previous results in [1] and [12] (and justifies the notation for the expansion coefficients of eq. (32)). The valence flavour structure of eq. (39) then describes the broken isospin case of $p \equiv \Sigma(uud), n \equiv \Sigma(ddu), \Sigma^+ \equiv \Sigma(uus),$

³From eq. (32) we have $P_{E^+} = \frac{3}{2}A_2(\delta\mu_s - \delta\bar{\mu}) + \dots = A_2(\delta\mu_s - \delta\mu_l) + \dots$. From eq. (3) (and Fig. 2), generalising to PQ quarks, eq. (30), we see that with $A_2 > 0$ if $\delta\mu_l < \delta\mu_s$ then M_H describes M_Σ while if $\delta\mu_l > \delta\mu_s$ then M_L describes M_Σ . Hence M_Σ^2 is always given by $P_{A_1} + P_{E^+}$. Similarly M_Λ^2 is given by $P_{A_1} - P_{E^+}$.

⁴It should be clear from the context whether we are referring to the Sigma particle or collectively to a particle on the outer ring of the octet. A similar comment holds for the Lambda.

$\Sigma^- \equiv \Sigma(dds)$, and $\Xi^0 = \Sigma(ssu)$, $\Xi^- = \Sigma(ssd)$ as well as the isospin degenerate $\Sigma^0 \equiv \Sigma(ll's)$. Furthermore now that we have cubic terms present, the Coleman-Glashow mass relation [15] is violated

$$\begin{aligned} M_n^2 - M_p^2 - M_{\Sigma^-}^2 + M_{\Sigma^+}^2 + M_{\Xi^-}^2 - M_{\Xi^0}^2 \\ = 2(C_4 - 3C_6)(\delta\mu_s - \delta\mu_u)(\delta\mu_s - \delta\mu_d)(\delta\mu_d - \delta\mu_u), \end{aligned} \quad (40)$$

(compare with eq. (38) in [12]).

At the cubic level we have 4 new coefficients C_3, C_4, C_5, C_6 involving the valence quarks alone, and 3 new coefficients C_0, C_1, C_2 which involve the sea quark masses, and which drop out for calculations on the symmetric background, $\delta m_q = 0$. Eq. (39) assumes that \bar{m} , the average sea quark mass, is held constant. A large number of additional terms appear if that constraint is relaxed. If we work on single background all the sea-quark terms can be absorbed into the valence parameters; the B_0 and C_0 terms can be absorbed into M_0^2 ; C_1 and C_2 can be absorbed into A_1 and A_2 respectively.

Useful for numerical simulations is to take mass degenerate u and d sea quarks, so we have 2 + 1 flavours rather than 1 + 1 + 1 in the generation of configurations

$$\delta m_u = \delta m_d \equiv \delta m_l, \quad (41)$$

which (together with eq. (29)) is equivalent to the replacements

$$\delta m_l^2 \leftrightarrow \frac{1}{6}(\delta m_u^2 + \delta m_d^2 + \delta m_s^2), \quad \delta m_l^3 \leftrightarrow -\frac{1}{2}\delta m_u \delta m_d \delta m_s, \quad (42)$$

in eq. (32) for $P_G, G = A_1, E^+, E^-, A_2$.

Similarly we can write down the mass of the octet Lambda baryon as

$$\begin{aligned} M_\Lambda^2(aa'b) &= M_0^2 + A_1(2\delta\mu_a + \delta\mu_b) - A_2(\delta\mu_b - \delta\mu_a) \\ &\quad + \frac{1}{6}B_0(\delta m_u^2 + \delta m_d^2 + \delta m_s^2) \\ &\quad + B_1(2\delta\mu_a^2 + \delta\mu_b^2) - B_2(\delta\mu_b^2 - \delta\mu_a^2) + B_4(\delta\mu_b - \delta\mu_a)^2 \\ &\quad + C_0\delta m_u \delta m_d \delta m_s \\ &\quad + [C_1(2\delta\mu_a + \delta\mu_b) - C_2(\delta\mu_b - \delta\mu_a)](\delta m_u^2 + \delta m_d^2 + \delta m_s^2) \\ &\quad + C_3(\delta\mu_a + \delta\mu_b)^3 + (C_4 - 2C_3)(\delta\mu_a + \delta\mu_b)^2(\delta\mu_b - \delta\mu_a) \\ &\quad + C_7(\delta\mu_a + \delta\mu_b)(\delta\mu_b - \delta\mu_a)^2 + C_8(\delta\mu_b - \delta\mu_a)^3. \end{aligned} \quad (43)$$

If all three quark masses are the same then all the masses become degenerate,

$$M_\Sigma^2(aaa'') \equiv M_\Sigma^2(aa'a'') \equiv M_\Lambda^2(aa'a''). \quad (44)$$

In addition, for mass degenerate valence up and down quarks, then the expansion in eq. (39) now incorporates not only the mass degenerate nucleons, $p, n \equiv \Sigma(lll'')$ with mass $M_N = M_\Sigma(lll'')$, the Sigmas, $\Sigma^-, \Sigma^+ \equiv \Sigma(lls)$ and $\Sigma^0 \equiv \Sigma(ll's)$ with mass $M_\Sigma = M_\Sigma(lls) = M_\Sigma(ll's)$ and Xis, $\Xi^-, \Xi^0 \equiv \Xi(ssl)$

with mass $M_{\Xi} = M_{\Sigma}(ssl)$, but can also be extended to incorporate the fictitious baryon, $N_s(sss'')$ with mass $M_{\Sigma}(sss'')$. Furthermore the expansion in eq. (43) also incorporates not only the Lambda, $\Lambda \equiv \Lambda(ll's)$ with mass $M_{\Lambda} = M_{\Lambda}(ll's)$, but can be extended to the fictitious baryon $\Lambda_{2sl}(ss'l)$ with mass $M_{\Lambda}(ss'l)$. For three mass degenerate valence quarks, we see that this mass formula reduces to the previous formula $M_{\Lambda}(ll'l'') = M_{\Sigma}(ll'l'')$ and $M_{\Lambda}(ss's'') = M_{\Sigma}(sss'')$.

The Λ mass formula involves several parameters B_4 , C_7 and C_8 which do not appear in the other baryon masses. We can understand why some terms in M_{Λ}^2 are constrained by the other hadron masses, while others are independent. The partially quenched quantities

$$(X_N^2)^{PQ} \equiv \frac{1}{3}(M_N^2 + M_{\Sigma}^2 + M_{\Xi}^2), \quad (X_{\Lambda}^2)^{PQ} \equiv \frac{1}{2}(M_{\Lambda}^2 + M_{\Sigma}^2), \quad (45)$$

agree with each other exactly if $\delta\mu_s = \delta\mu_l$ (unbroken valence $SU(3)$, eq. (44)). The quantity $(X_{\Lambda}^2)^{PQ} - (X_N^2)^{PQ}$ is a 27-plet, so it should be $O((\delta\mu_s - \delta\mu_l)^2)$ if valence $SU(3)$ is broken. Therefore any terms in M_{Λ}^2 which survive, or vanish more slowly than $(\delta\mu_s - \delta\mu_l)^2$, as $\delta\mu_s \rightarrow \delta\mu_l$ are constrained by the other baryon masses; any terms which vanish like $(\delta\mu_s - \delta\mu_l)^2$ or faster can have new independent coefficients unconnected to the other baryon masses. The B_4 , C_7 and C_8 terms are the only terms in M_{Λ}^2 which vanish fast enough as $\delta\mu_s \rightarrow \delta\mu_l$ to evade this $(X_{\Lambda}^2)^{PQ} \rightarrow (X_N^2)^{PQ}$ constraint, as from eqs. (39) and (43) we find⁵

$$\begin{aligned} (X_{\Lambda}^2)^{PQ} - (X_N^2)^{PQ} &= \frac{1}{6}(3B_4 - B_3)(\delta\mu_s - \delta\mu_l)^2 \\ &\quad + \frac{1}{18}(3C_7 - C_5 - 9C_6 + 9C_8)(\delta\mu_s - \delta\mu_l)^3 \\ &\quad + \frac{1}{9}(3C_7 - 6C_3 - C_5)(\delta\mu_s + 2\delta\mu_l)(\delta\mu_s - \delta\mu_l)^2. \end{aligned} \quad (46)$$

At the $O(\delta\mu_q^2)$ level all the coefficients M_0^2, A_i, B_i occur in eqs. (39), (43), and so can be found from a 2 + 1 flavour partially quenched calculation. (The coefficients are functions of \bar{m} , and so will not change from a 1 + 1 + 1 simulation to a 2 + 1 simulation provided that \bar{m} is held constant.) This will no longer hold at $O(\delta\mu_q^3)$, to find P_{A_2} we would need to measure the other A_2 mass combination, which is the Coleman–Glashow violation, eq. (40) or eq. (38) of [12], which requires 1 + 1 + 1 valence quarks and a more general expansion than given in eqs. (39) and (43), so we have introduced a new coefficient, C_9 , here.

⁵ For completeness, we also give here the result for $(X_{\Lambda}^2)^{PQ} - (X_N^2)^{PQ}$ in the full 1 + 1 + 1 case, generalising eq. (46),

$$\begin{aligned} (X_{\Lambda}^2)^{PQ} - (X_N^2)^{PQ} &= \frac{1}{4}(3B_4 - B_3)(\delta\mu_u^2 + \delta\mu_d^2 + \delta\mu_s^2 - 3\delta\bar{\mu}^2) \\ &\quad + \frac{3}{4}(3C_7 - C_5 - 9C_6 + 9C_8)(\delta\mu_s - \delta\bar{\mu})(\delta\mu_u - \delta\bar{\mu})(\delta\mu_d - \delta\bar{\mu}) \\ &\quad + \frac{1}{2}(3C_7 - 6C_3 - C_5)(\delta\mu_u^2 + \delta\mu_d^2 + \delta\mu_s^2 - 3\delta\bar{\mu}^2)\delta\bar{\mu}, \end{aligned}$$

where $\delta\bar{\mu}$ is defined in eq. (34).

4 Scale independent quantities

4.1 Ratios

We now restrict ourselves to giving results to NLO (which will be sufficient for our numerical determinations). For completeness the full NNLO expressions are given in Appendix C.

Numerically it is advantageous to consider scale independent quantities, as previously discussed and used in [1, 12]. As stated in section 2.3 flavour blind (or singlet quantities) are suitable to form both scale independent mass ratios and to determine the scale. We denote these quantities generically by X_S . One useful type can be considered as the ‘centre of mass’ of the multiplet. Thus for the baryon octet, one possibility is

$$\begin{aligned} X_N^2 &= \frac{1}{6}(M_p^2 + M_n^2 + M_{\Sigma^+}^2 + M_{\Sigma^-}^2 + M_{\Xi^0}^2 + M_{\Xi^-}^2) \\ &= M_0^2 + (\frac{1}{6}B_0 + B_1 + B_3)(\delta m_u^2 + \delta m_d^2 + \delta m_s^2). \end{aligned} \quad (47)$$

At the physical point this has the value [2]

$$X_N^{\text{exp}} = 1.1610 \text{ GeV}. \quad (48)$$

As discussed in [12] flavour blind quantities, due to the vanishing of the linear δm_q terms, (see eq. (47)) remain almost constant as we approach the physical point, so $a_N = (a_N X_N)/X_N^{\text{exp}}$ determines the lattice spacing $a_N(\kappa_0)$, [12]. (We have introduced the N subscript as we are using X_N to set the scale.)

We shall in future consider for the baryon octet the dimensionless ratios

$$\tilde{M}^2 \equiv \frac{M^2}{X_N^2}, \quad \dots, \quad (49)$$

and we wish to rewrite eq. (21) in the form

$$\begin{aligned} \tilde{M}_H^2 &= \tilde{P}_{A_1} + \sqrt{\tilde{P}_{E^+}^2 + \tilde{P}_{E^-}^2 + \tilde{P}_{A_2}^2} \\ \tilde{M}_L^2 &= \tilde{P}_{A_1} - \sqrt{\tilde{P}_{E^+}^2 + \tilde{P}_{E^-}^2 + \tilde{P}_{A_2}^2}, \end{aligned} \quad (50)$$

and eq. (23) as

$$\tan 2\theta_{\Sigma\Lambda} = \frac{\sqrt{\tilde{P}_{E^-}^2 + \tilde{P}_{A_2}^2}}{\tilde{P}_{E^+}}, \quad \tan \phi_{\Sigma\Lambda} = \frac{\tilde{P}_{A_2}}{\tilde{P}_{E^-}}, \quad (51)$$

where

$$P_G \rightarrow \tilde{P}_G = \frac{P_G}{X_N^2}, \quad G = A_1, E^+, E^-, A_2. \quad (52)$$

This can be achieved by defining

$$\tilde{A}_i = \frac{A_i}{M_0^2}, \quad \tilde{B}_i = \frac{B_i}{M_0^2}, \quad (53)$$

together with the replacement

$$B_0 \rightarrow \tilde{B}_0 = -6 \frac{B_1 + B_3}{M_0^2} = -6(\tilde{B}_1 + \tilde{B}_3). \quad (54)$$

The \tilde{P}_G , $G = A_1, E^+, E^-, A_2$ scale independent flavour $SU(3)$ expansion coefficients are then given to NLO by

$$\begin{aligned} \tilde{P}_{A_1} &= 1 + 3\tilde{A}_1\delta\bar{\mu} \\ &\quad + \frac{1}{6}\tilde{B}_0(\delta m_u^2 + \delta m_d^2 + \delta m_s^2) + \tilde{B}_1(\delta\mu_a^2 + \delta\mu_b^2 + \delta\mu_c^2) \\ &\quad + \frac{1}{4}(\tilde{B}_3 + \tilde{B}_4) \left[(\delta\mu_c - \delta\mu_a)^2 + (\delta\mu_c - \delta\mu_b)^2 + (\delta\mu_a - \delta\mu_b)^2 \right], \\ \tilde{P}_{E^+} &= \frac{3}{2}\tilde{A}_2(\delta\mu_c - \delta\bar{\mu}) \\ &\quad + \frac{1}{2}\tilde{B}_2(2\delta\mu_c^2 - \delta\mu_a^2 - \delta\mu_b^2) \\ &\quad + \frac{1}{4}(\tilde{B}_3 - \tilde{B}_4) \left[(\delta\mu_c - \delta\mu_a)^2 + (\delta\mu_c - \delta\mu_b)^2 - 2(\delta\mu_a - \delta\mu_b)^2 \right], \\ \tilde{P}_{E^-} &= \frac{\sqrt{3}}{2}\tilde{A}_2(\delta\mu_b - \delta\mu_a) \\ &\quad + \frac{\sqrt{3}}{2}\tilde{B}_2(\delta\mu_b^2 - \delta\mu_a^2) + \frac{\sqrt{3}}{4}(\tilde{B}_3 - \tilde{B}_4) \left[(\delta\mu_c - \delta\mu_b)^2 - (\delta\mu_c - \delta\mu_a)^2 \right], \\ \tilde{P}_{A_2} &= 0, \end{aligned} \quad (55)$$

and

$$\delta\bar{\mu} \equiv \frac{1}{3}(\delta\mu_a + \delta\mu_b + \delta\mu_c), \quad (56)$$

(where we have written the more general $\delta\mu_a, \delta\mu_b, \delta\mu_c$ rather than the previous $\delta\mu_u, \delta\mu_d, \delta\mu_s$ respectively).

Similarly the changes to the baryon masses for mass degenerate up and down quarks are relatively simple. For completeness we give the scale independent flavour $SU(3)$ expansions

$$\begin{aligned} \tilde{M}_\Sigma^2(aab) &= 1 + \tilde{A}_1(2\delta\mu_a + \delta\mu_b) + \tilde{A}_2(\delta\mu_b - \delta\mu_a) \\ &\quad + \tilde{B}_0\delta m_i^2 + \tilde{B}_1(2\delta\mu_a^2 + \delta\mu_b^2) + \tilde{B}_2(\delta\mu_b^2 - \delta\mu_a^2) + \tilde{B}_3(\delta\mu_b - \delta\mu_a)^2, \end{aligned} \quad (57)$$

and

$$\begin{aligned} \tilde{M}_\Lambda^2(aa'b) &= 1 + \tilde{A}_1(2\delta\mu_a + \delta\mu_b) - \tilde{A}_2(\delta\mu_b - \delta\mu_a) \\ &\quad + \tilde{B}_0\delta m_i^2 + \tilde{B}_1(2\delta\mu_a^2 + \delta\mu_b^2) - \tilde{B}_2(\delta\mu_b^2 - \delta\mu_a^2) + \tilde{B}_4(\delta\mu_b - \delta\mu_a)^2, \end{aligned} \quad (58)$$

where \tilde{B}_0 and \tilde{C}_0 are given in eq. (54).

4.2 Analytic expressions

Finally we analytically expand out eqs. (50) and (51) to NLO. On the unitary line (which is all that we shall later need) this gives

$$\tan 2\theta_{\Sigma\Lambda} = \frac{(\delta m_d - \delta m_u)}{\sqrt{3}\delta m_s} \times \quad (59)$$

$$\left[1 - \frac{1}{3} \left(\frac{2\tilde{B}_2 + 3\tilde{B}_3 - 3\tilde{B}_4}{\tilde{A}_2} \right) \frac{(\delta m_s - \delta m_u)(\delta m_s - \delta m_d)}{\delta m_s} \right],$$

and for the sum and difference, after additionally expanding further in the masses (rather than (mass)²)

$$\frac{1}{2} (\tilde{M}_{\Sigma^0} + \tilde{M}_{\Lambda^0}) = 1 + \frac{1}{8} (-\tilde{B}_3 + 3\tilde{B}_4 - \frac{3}{2}\tilde{A}_2^2) (\delta m_u^2 + \delta m_d^2 + \delta m_s^2), \quad (60)$$

and

$$\tilde{M}_{\Sigma^0} - \tilde{M}_{\Lambda^0} = \sqrt{\frac{3}{2}} \tilde{A}_2 \sqrt{\delta m_u^2 + \delta m_d^2 + \delta m_s^2} \times \quad (61)$$

$$\left[1 + \frac{3}{2} \left(\frac{2\tilde{B}_2 + 3\tilde{B}_3 - 3\tilde{B}_4}{\tilde{A}_2} \right) \frac{\delta m_u \delta m_d \delta m_s}{\delta m_u^2 + \delta m_d^2 + \delta m_s^2} \right].$$

In the isospin limit, upon using eq. (41) we again see that the mixing angle in eq. (59) vanishes, but the $\Sigma - \Lambda$ mass difference in eq. (61) still persists. Let us first examine the convergence of the series. If we expand in terms of the quark mass difference $\delta m_d - \delta m_u$ and, now generalising eq. (41) slightly, the average quark mass δm_l where δm_l is given by

$$\delta m_l = (\delta m_u + \delta m_d)/2, \quad (62)$$

then

$$-\frac{(\delta m_s - \delta m_u)(\delta m_s - \delta m_d)}{3\delta m_s} = \frac{3}{2}\delta m_l + O((\delta m_d - \delta m_u)^2),$$

$$\frac{3\delta m_u \delta m_d \delta m_s}{2(\delta m_u^2 + \delta m_d^2 + \delta m_s^2)} = \frac{1}{2}\delta m_l + O((\delta m_d - \delta m_u)^2). \quad (63)$$

At (or close to) the physical point $\delta m_d \approx \delta m_u$ so that in the expansion of $\tan 2\theta_{\Sigma\Lambda}$, as compared to $\tilde{M}_{\Sigma^0} - \tilde{M}_{\Lambda^0}$ the NLO term is a factor ≈ 3 larger, and hence the convergence of the $SU(3)$ symmetry flavour breaking series is expected to be worse for the mixing angle than for the mass difference.

As an estimate of the contribution of isospin breaking to $\Sigma - \Lambda$ mass splitting we expand in the difference between the isospin breaking and isospin symmetric cases giving to LO

$$(\tilde{M}_{\Sigma^0} - \tilde{M}_{\Lambda^0}) - (\tilde{M}_{\Sigma} - \tilde{M}_{\Lambda})\Big|_{\delta m_l} = \frac{1}{8} \tilde{A}_2 \frac{(\delta m_d - \delta m_u)^2}{|\delta m_l|}. \quad (64)$$

Mass splitting formulae for the baryons on the outer ring were given in [1] (eqs. (12) – (15)). For example we have

$$\begin{aligned} \tilde{M}_n - \tilde{M}_p &\equiv \tilde{M}_\Sigma(duu) - \tilde{M}_\Sigma(uud) \\ &= \frac{1}{2}(\delta m_d - \delta m_u) \left[\tilde{A}_1 - 2\tilde{A}_2 + (2\tilde{B}_1 - 4\tilde{B}_2 - \frac{3}{2}\tilde{A}_1^2 + 3\tilde{A}_1\tilde{A}_2)\delta m_l \right]. \end{aligned} \quad (65)$$

There are several differences between the isospin splitting between $\Sigma^0 - \Lambda^0$ and $n - p$. For $\Sigma - \Lambda$ mixing from eq. (64) we see that the mass splitting starts quadratically in $(\delta m_d - \delta m_u)$ while from eq. (65) for $n - p$ the splitting is linear. Furthermore from eq. (61) we see that this difference depends principally on \tilde{A}_2 and not at all on \tilde{A}_1 . (The \tilde{A}_1 term has cancelled in the unitary limit in eq. (36).) This is completely opposite to the mass splittings of the baryons on the ‘outer ring’, [1] and eq. (65), which depend on \tilde{A}_1 as well as \tilde{A}_2 . As \tilde{A}_1 is numerically found to be much larger the result is then dominated by this coefficient.

We shall use these expansions in our numerical determinations. While for the central values of $M_{\Sigma^0} - M_{\Lambda^0}$ and $M_n - M_p, \dots$, it matters little whether we use these expressions or directly use those in section 4.1, for the error (particularly of $M_n - M_p, \dots$ but rather less so for $M_{\Sigma^0} - M_{\Lambda^0}$) the difference depending on just one or two coefficients leads a better determination.

5 Matrix elements

While we are primarily interested in this article on masses, we now make a few comments here on matrix elements. We see from eq. (64) that in masses isospin breaking effects are second order in $\delta m_d - \delta m_u$. However, if we look at transition amplitudes instead of masses, the effects of the mixing angle appear at first order in $\theta_{\Sigma\Lambda}$, i.e. at first order in $\delta m_d - \delta m_u$, making an experimental determination of the mixing angle much more feasible.

It was pointed out in [16] that the semi-leptonic decays $\Sigma^- \rightarrow \Lambda^0 e \bar{\nu}$ and $\Sigma^+ \rightarrow \Lambda^0 e^+ \nu$ are particularly sensitive to the $\Sigma - \Lambda$ mixing angle. In the absence of mixing we would have

$$\begin{aligned} \Sigma^- \rightarrow \Sigma & \quad A = \sqrt{2}(\gamma_\mu + F\gamma_\mu\gamma_5)V_{ud} \\ \Sigma^+ \rightarrow \Sigma & \quad A = -\sqrt{2}(\gamma_\mu + F\gamma_\mu\gamma_5)V_{ud} \\ \Sigma^- \rightarrow \Lambda & \quad A = \sqrt{\frac{2}{3}}D\gamma_\mu\gamma_5V_{ud} \\ \Sigma^+ \rightarrow \Lambda & \quad A = \sqrt{\frac{2}{3}}D\gamma_\mu\gamma_5V_{ud}, \end{aligned} \quad (66)$$

where A is the amplitude, F and D are the axial $SU(3)$ couplings and $V_{ud} \sim \cos\theta_C$ the appropriate CKM matrix element. There are two important points to note about these amplitudes. First, the $\Sigma^- \rightarrow \Lambda$ amplitude is equal to the $\Sigma^+ \rightarrow \Lambda$ amplitude, while the $\Sigma^- \rightarrow \Sigma$ has the opposite sign to the $\Sigma^+ \rightarrow \Sigma$. Secondly,

the $\Sigma \rightarrow \Lambda$ amplitudes are purely axial, while the $\Sigma \rightarrow \Sigma$ amplitudes have a large vector contribution.

If we now introduce mixing as defined in eq. (22)

$$\Lambda^0 = -\sin\theta_{\Sigma\Lambda}\Sigma + \cos\theta_{\Sigma\Lambda}\Lambda, \quad (67)$$

we have

$$\begin{aligned} \Sigma^+ \rightarrow \Lambda^0 \quad A &= \left\{ \sqrt{2}\gamma_\mu \sin\theta_{\Sigma\Lambda} + \left(\sqrt{\frac{2}{3}}D \cos\theta_{\Sigma\Lambda} + \sqrt{2}F \sin\theta_{\Sigma\Lambda} \right) \gamma_\mu \gamma_5 \right\} V_{ud} \\ \Sigma^- \rightarrow \Lambda^0 \quad A &= \left\{ -\sqrt{2}\gamma_\mu \sin\theta_{\Sigma\Lambda} + \left(\sqrt{\frac{2}{3}}D \cos\theta_{\Sigma\Lambda} - \sqrt{2}F \sin\theta_{\Sigma\Lambda} \right) \gamma_\mu \gamma_5 \right\} V_{ud}, \end{aligned} \quad (68)$$

for the transition amplitudes to the physical (mixed) Λ^0 .

We see two effects which might be experimentally measurable at levels of order several percent. Firstly, the $\Sigma \rightarrow \Lambda$ amplitudes have acquired a small vector component, which should change the angular distributions of the decay products. Secondly, the interference between the D and F components of the amplitudes works in opposite directions in the two cases. After correcting for phase space differences, we should see that the total $\Sigma^+ \rightarrow \Lambda^0$ decay rate is enhanced, while the $\Sigma^- \rightarrow \Lambda^0$ is suppressed by mixing. Both effects are first order in the mixing, and so first order in $m_d - m_u$, and so they should be much more significant than the effect of mixing on the hadron masses.

In principle mixing effects of this sort appear in all decays of the Σ^0 and Λ^0 , and all decays with a Σ^0 or Λ^0 in the decay products. All the semi-leptonic decays effected by the $\Sigma - \Lambda$ mixing are also discussed in [16].

6 Determination of the expansion coefficients

From eq. (17) we see that we need to find the 2×2 mass matrix. We see from eqs. (59), (61) that to determine $\theta_{\Sigma\Lambda}$, M_{Σ^0} , M_{Λ^0} to LO we need to find the \tilde{A}_2 coefficient; to NLO also \tilde{B}_2 , \tilde{B}_3 and \tilde{B}_4 . We also need, of course, δm_u^* , δm_d^* , δm_s^* , i.e. a determination of the physical point. As apparent from section 3.2, they can in principle all be determined from $2 + 1$ simulations of the Σ and Λ masses. However we have in addition also determined the off-diagonal matrix elements of the 2×2 mass matrix eq. (17) for some PQ quark masses with $\delta\mu_a \neq \delta\mu_b \neq \delta\mu_c$.

Numerical simulations have been performed using $n_f = 2 + 1$ $O(a)$ improved clover fermions [17] at $\beta = 5.50$ and on $32^3 \times 64$ lattice sizes, [12]. Errors given here are statistical (using $\sim O(1500)$ configurations) later together with an estimate of the systematic errors.

Once the $SU(3)$ flavour degenerate sea quark mass, m_0 , is chosen, subsequent sea quark mass points m_l , m_s are then arranged in the various simulations to keep \bar{m} ($= m_0$) constant. This ensures that all the expansion coefficients given previously do not change. In [12] it was seen that a linear fit provides a good

description of the numerical data on the unitary line over the relatively short distance from the $SU(3)$ flavour symmetric point down to the physical pion mass. This proved useful in helping us in choosing the initial point on the $SU(3)$ flavour symmetric line to give a path that reaches (or is very close to) the physical point.

The bare quark masses (both valence μ_q and unitary $\mu_q \rightarrow m_q$) in lattice units are given by

$$\mu_q = \frac{1}{2} \left(\frac{1}{\kappa_q} - \frac{1}{\kappa_{0c}} \right) \quad \text{with } q = l, s, 0, a, b, \quad (69)$$

and where vanishing of the quark mass along the $SU(3)$ flavour symmetric line determines κ_{0c} . We denote the $SU(3)$ flavour symmetric kappa value, κ_0 , as being the initial point on the path that leads to the physical point. This is given in eq. (69) with $q = 0$ and replacing μ_0 by m_0 . Keeping $\bar{m} = \text{constant} = m_0$ then gives

$$\delta\mu_q = \frac{1}{2} \left(\frac{1}{\kappa_q} - \frac{1}{\kappa_0} \right). \quad (70)$$

We see that κ_{0c} has dropped out of eq. (70), so we do not need its explicit value here. While the choice of partially quenched quark masses is not restricted, along the unitary line the quark masses are restricted and we have

$$\kappa_s = \frac{1}{\frac{3}{\kappa_0} - \frac{2}{\kappa_l}}. \quad (71)$$

So a given κ_l determines κ_s here. The $SU(3)$ flavour symmetric κ_0 value chosen here for this action was found to be $\kappa_0 = 0.12090$, [12]. The constancy of flavour singlet quantities along the unitary line to the physical point [12], leads directly from X_N to an estimation of the lattice spacing here of $a_N(\kappa_0 = 0.12090) \sim 0.079$ fm.

6.1 Correlation functions

The wavefunctions (operators) used to determine the hadron masses are all taken to be Jacobi smeared. For the $\Sigma(abc)$ and $\Lambda(abc)$ we have

$$\begin{aligned} \mathcal{B}_{\Sigma(abc)\alpha}(x) &= \frac{1}{\sqrt{2}} \epsilon^{abc} \left(b_\alpha^a(x) \left[a^b(x)^{TD} C \gamma_5 c^c(x) \right] + a_\alpha^a(x) \left[b^b(x)^{TD} C \gamma_5 c^c(x) \right] \right), \\ \mathcal{B}_{\Lambda(abc)\alpha}(x) &= \frac{1}{\sqrt{6}} \epsilon^{abc} \left(2c_\alpha^a(x) \left[a^b(x)^{TD} C \gamma_5 b^c(x) \right] \right. \\ &\quad \left. + b_\alpha^a(x) \left[a^b(x)^{TD} C \gamma_5 c^c(x) \right] - a_\alpha^a(x) \left[b^b(x)^{TD} C \gamma_5 c^c(x) \right] \right). \end{aligned} \quad (72)$$

where $C = \gamma_2 \gamma_4$ and the superscript TD denotes a transpose in Dirac space⁶. The Σ wavefunction is even under the interchange $a \leftrightarrow b$, while the Λ wavefunction is odd under this interchange.

⁶The colour indices are also denoted by a, b and c ; hopefully this will cause no confusion.

The correlation functions (on a lattice of temporal extension T and spatial volume V_s) are given from the correlation matrix⁷

$$\begin{aligned} C_{ij}(t) &= \frac{1}{V_s} \text{Tr}_D \Gamma_{\text{unpol}} \left\langle \sum_{\vec{y}} \mathcal{B}_i(\vec{y}, t) \sum_{\vec{x}} \bar{\mathcal{B}}_j(\vec{x}, 0) \right\rangle \\ &\propto A_i A_j e^{-M_L t} + B_i B_j e^{-M_H t}, \quad 0 \ll t \ll T/2, \end{aligned} \quad (73)$$

with $i, j = \Sigma(abc), \Lambda(abc)$. This matrix is diagonalised, yielding M_H and M_L .

As many of our choices of PQ valence quark masses have degenerate mass a and b quarks, then as discussed in section 3.2, some simplification for the Σ wavefunction is possible. In this case we note that the Grassmann contractions lead to $C_{\Sigma(aa'b)\Lambda(aa'b)} = 0$ identically, so that, as expected, the correlation matrix eq. (73) is diagonal. Furthermore for the outer octet baryons we can use instead the wavefunction

$$\mathcal{B}_{\Sigma(aab)\alpha}(x) = \epsilon^{abc} a_\alpha^a(x) \left[a^b(x)^{T_D} C \gamma_5 b^c(x) \right], \quad (74)$$

for valence quarks a and b . The corresponding correlation function is

$$\begin{aligned} C_{\Sigma(aab)\Sigma(aab)}(t) &= \frac{1}{V_s} \text{Tr}_D \Gamma_{\text{unpol}} \left\langle \sum_{\vec{y}} \mathcal{B}_{\Sigma(aab)}(\vec{y}, t) \sum_{\vec{x}} \bar{\mathcal{B}}_{\Sigma(aab)}(\vec{x}, 0) \right\rangle \\ &\propto A e^{-M_\Sigma t}, \quad 0 \ll t \ll T/2, \end{aligned} \quad (75)$$

This determines the $M_\Sigma(aab)$ masses. Considering the correlation functions, $C_{\Sigma(aa'b)\Sigma(aa'b)}(t)$ and $C_{\Sigma(aab)\Sigma(aab)}(t)$ then the Grassmann contractions can be shown to be equivalent so

$$C_{\Sigma(aab)\Sigma(aab)}(t) \propto C_{\Sigma(aa'b)\Sigma(aa'b)}(t), \quad (76)$$

and so the masses are the same, $M_{\Sigma(aab)} = M_{\Sigma(aa'b)}$, as indicated in in eq. (39). Similarly when all the quark masses are degenerate, then $C_{\Sigma(aaa'')\Sigma(aaa'')}(t) \propto C_{\Lambda(aa'a'')\Lambda(aa'a'')}(t)$ or $M_{\Sigma(aaa'')} = M_{\Lambda(aa'a'')}$ as expected.

Fitting to eq. (50) then determines the \tilde{A} , \tilde{B} coefficients. Together with a knowledge of the physical (and unitary) quark masses, δm_u^* , δm_d^* , δm_s^* , this leads to an evaluation of the physical Σ^0 and Λ^0 masses, see eq. (4).

6.2 Numerical results for the expansion coefficients

Although simulations between the $SU(3)$ flavour symmetric point and the physical point are in principle enough to determine the expansion coefficients, in practice it is advantageous to increase the range to try to determine the NLO terms more reliably (i.e. with reduced error bars). However we also wish that the

⁷ $\Gamma_{\text{unpol}} = \frac{1}{2}(1 + \gamma_4)$.

$SU(3)$ flavour breaking expansion developed here remains valid. As we shall see later in this section, for the $\Sigma - \Lambda$ splitting there is a further constraint. This leads to a choice of valence quark masses in the range $|\delta\mu_a| + |\delta\mu_b| + |\delta\mu_c| \lesssim 0.2$. This translates to nucleon masses of $\lesssim 2 \text{ GeV}$, so roughly the baryon masses lie in the middle of our fit range.

In order to determine these \tilde{A} and \tilde{B} coefficients, additional PQ masses have been determined on the set of gauge configurations that have all three sea quark masses equal, i.e. at the $SU(3)$ flavour symmetric point $\kappa_0 = 0.12090$. For these particular masses $\delta m_l = 0 = \delta m_s$ automatically. These masses are a mixture of masses with three distinctive valence quark masses (so we have mixing and H and L masses), together with two mass degenerate quark data, when there is no mixing. Thus we now make a simultaneous fit to eq. (50) using the available data: the unitary data from [12] (the $32^3 \times 64$ lattice data for $M_N, M_\Lambda, M_\Sigma, M_\Xi$ in Table XXII) together with some lighter quark mass data on a $48^3 \times 96$ lattice. All the fit data used is given in Appendix D.

There are 2 LO (\tilde{A}) and 4 NLO (\tilde{B}) coefficients to determine. Thus we have a 6 parameter fit for the fit functions in eq. (50). It was found advantageous to preserve the identity of the Σ and Λ particles whenever possible, so for the mass degenerate PQ results, eqs. (57) and (58) were used. In Table 3 we give the

\tilde{A}_1	10.17(12)
\tilde{A}_2	1.849(124)
\tilde{B}_1	13.71(4.19)
\tilde{B}_2	-20.02(4.70)
\tilde{B}_3	-4.125(5.742)
\tilde{B}_4	-30.63(5.97)

Table 3: Fit results for LO and NLO expansion coefficients.

results of this fit. With our normalisation for the expansion coefficients all the numbers are $\sim O(10)$, except \tilde{A}_2 which is rather smaller. The (MINUIT) fit used gave $\chi^2/\text{dof} \sim 38/60 \sim 0.6$ per degree of freedom.

Two simple plots which illustrate the fit results are first the completely mass degenerate case (when as discussed previously in section 6.1 all outer baryon, Σ and Λ masses are the same), which may be illustrated by defining

$$S_{\Sigma\Lambda} \equiv \tilde{M}_\Sigma^2(aaa'') = 1 + 3\tilde{A}_1\delta\mu_a + 3\tilde{B}_1\delta\mu_a^2. \quad (77)$$

Secondly we can consider the ‘symmetric’ difference case (between Σ and Λ) by setting

$$\begin{aligned} D_{\Sigma\Lambda}^{\text{sym}} &\equiv \frac{\tilde{M}_\Sigma^2(aab) - \tilde{M}_\Lambda^2(aa'b) - \tilde{M}_\Sigma^2(bba) + \tilde{M}_\Lambda^2(bb'a)}{4(\delta\mu_b - \delta\mu_a)} \\ &= \tilde{A}_2 + \tilde{B}_2(\delta\mu_a + \delta\mu_b). \end{aligned} \quad (78)$$

(Again in these expressions and elsewhere a' , a'' , \dots are mass degenerate but distinct quarks.) At this order $D_{\Sigma\Lambda}^{\text{sym}}$ is just a function of $\delta\mu_a + \delta\mu_b$, at higher orders (see Appendix C, eq. (106)) there are terms $\propto \delta\mu_a - \delta\mu_b$. Note that the choice for $D_{\Sigma\Lambda}^{\text{sym}}$ tends to suppress them (and indeed eliminates them at NLO); this was the reason for the choice of this ‘symmetric derivative’.

For the $S_{\Sigma\Lambda}$ we have the results shown in Fig. 3. For $S_{\Sigma\Lambda}$, the fit is very

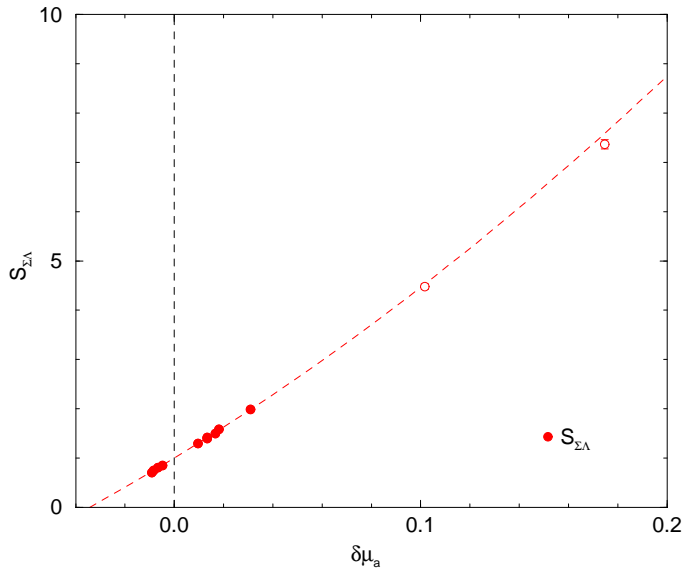


Figure 3: $S_{\Sigma\Lambda}$ versus $\delta\mu_a + \delta\mu_b$ ($S_{\Sigma\Lambda}$ is defined in eq. (77)), together with a fit also given in eq. (77). Points used in the fit are denoted by filled circles (those outside the fit range are given by opaque circles).

good and as indicated there could be easily extended to larger quark masses. As mentioned before \tilde{A}_1 is the relevant coefficient for mass splittings on the outer baryon ring.

In Fig. 4 we plot $D_{\Sigma\Lambda}^{\text{sym}}$ against $\delta\mu_a + \delta\mu_b$. We see that the data is not linear in $\delta\mu_a + \delta\mu_b$. (As explained before we would not expect the data in this plot to lie on a unique curve due to the possible presence in the fit of terms proportional to $\delta\mu_a - \delta\mu_b$. However due to the choice of $D_{\Sigma\Lambda}^{\text{sym}}$ deviations should be small.) However despite this the plot has a sharp increase as the quark mass is reduced, indicating a possible non-polynomial behaviour there. As this is related to the Σ – Λ mass splitting, this necessitates the restricted fit region, as compared to Fig. 3. (It should however also be noted that the unitary quark masses have $|\delta m_a| \lesssim 0.01$.)

The reason for this behaviour is due to spin–spin interaction between the quarks. It is known (e.g. [13]) that in quark models the mass splittings are partially due to the QCD spin–spin interaction between the quarks. From the Dirac equation we know that the magnetic moment of a fermion $\propto 1/m_a$, this

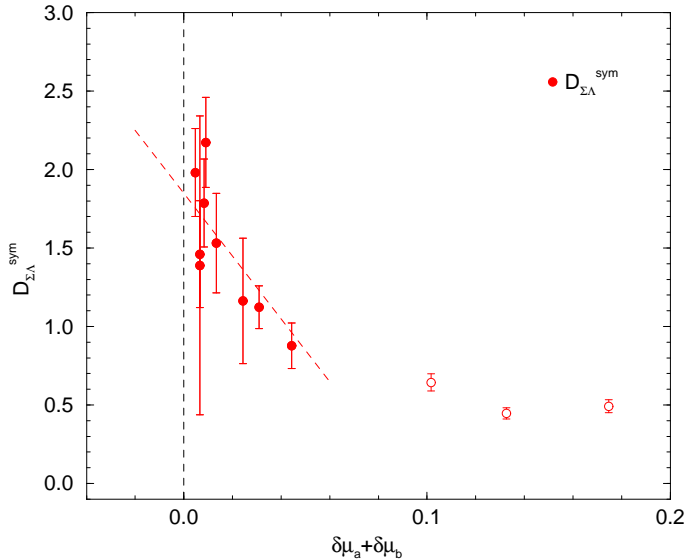


Figure 4: $D_{\Sigma\Lambda}^{\text{sym}}$ versus $\delta\mu_a + \delta\mu_b$, ($D_{\Sigma\Lambda}^{\text{sym}}$ is defined in eq. (78)), together with the fit also given in eq. (78). The same notation as in Fig. 3.

holds in QCD too, for the chromomagnetic moment, which might suggest a spin-spin interaction of the form $\propto 1/(m_a m_b)$. This has also recently been proposed in [14].

6.3 The physical point

By considering the equivalent pseudoscalar $SU(3)$ flavour breaking mass expansion as for the baryon octet and matching to the pseudoscalar meson masses gives δm_u^* , δm_d^* , δm_s^* . Again note that by considering the outer ring of the pseudoscalar octet, then provided that the average quark mass \bar{m} is held constant then the expansion coefficients can be determined from partially quenched 2 + 1 flavour simulations rather than 1 + 1 + 1 flavour expansions. This was discussed in [1] (and in particular the subtraction of QED effects) and we just quote the result of the analysis here, as given in Table 4. To cover uncertainties in electromagnetic

$$\frac{\delta m_u^*}{-0.01140(3)} \quad \frac{\delta m_d^*}{-0.01067(3)} \quad \frac{\delta m_s^*}{0.02207(4)}$$

Table 4: Results for the bare quark mass in lattice units at the physical point, slightly updated from [1].

effects arising from violations of Dashen's theorem, we assign a relative error $\sim 15\%$ to the splitting $\delta m_d^* - \delta m_u^*$, [1].

6.4 Comparison with ‘fan’ plots

We now compare the fit results with the mass values along the unitary line, i.e. which describe the evolution of the baryon masses along a path from the $SU(3)$ symmetric point down to the physical point in the isospin degenerate limit, i.e. $m_u = m_d \equiv m_l$. For this comparison we take the physical quark mass, in lattice units, from Table 4 as

$$\delta m_l^* \equiv (\delta m_u^* + \delta m_d^*)/2 = -0.01103(2). \quad (79)$$

In Fig. 5 we show the ‘fan’ plot for all the ‘ Σ ’ and ‘ Λ ’ type particles. We have $N(ll'l'') [= \Lambda_{3l}(ll'l'')]$, $\Lambda(ll's)$, $\Sigma(lls)$, $\Xi(ssl)$, $\Lambda_{2sl}(ss'l)$ and $N_s(sss'') [= \Lambda_{3s}(ss's'')]$. ($N_s(sss'')$ and $\Lambda_{2sl}(ss'l)$ are fictitious baryons, but provide additional useful data for the fits.) As this is the diagonal case there is no mixing and from eq. (38) the fit is given by $\tilde{M}_N^2 = P_{A_1} + P_{E^+}$, $\tilde{M}_\Lambda^2 = P_{A_1} - P_{E^+}$. We find good agreement with the expected results.

It can easily be seen (‘ruler test’) that the fits are dominated by the LO in the $SU(3)$ flavour symmetry breaking expansion. Given the fit results, this is not so surprising, as for the unitary results we have a maximum quark mass given by $|\delta m_l| \sim 0.01$, which is rather small (certainly in comparison with many of the PQ masses used) and indicates that at least in the region we are interested in the low order $SU(3)$ flavour breaking expansion describes the data well.

For completeness we give here the values at the $2 + 1$ QCD physical point (opaque circles in Fig. 5) of $\tilde{M}_N^{*2} = 0.6612(58)$, $\tilde{M}_\Lambda^{*2} = 0.9155(89)$, $\tilde{M}_\Sigma^{*2} = 1.052(4)$, $\tilde{M}_\Xi^{*2} = 1.286(9)$, $\tilde{M}_{\Lambda_{2sl}}^{*2} = 1.365(5)$ and $\tilde{M}_{N_s}^{*2} = 1.687(6)$. For a comparison to these values, the stars in Fig. 5 represent the average of the squared experimental masses of the appropriate particles, as defined in the figure caption.

7 Results and Conclusions

We now give results for the QCD contribution to the baryon masses and their splittings.

7.1 Outer ring of the baryon octet

We first discuss the masses on the outer ring of the baryon octet using the physical quark masses given in Table 4 and the expansion coefficients as given in Table 3.

Possible sources of systematic errors are discussed in Appendix A of [1] as coming from: finite lattice volume, convergence of the $SU(3)$ flavour symmetry breaking expansion, the path to the physical point and finite lattice spacing (to which we refer the reader). As the data set used has not changed greatly, the systematic errors are little effected, so we use the same methods giving similar results as determined there. For the mass ratios \tilde{M} we find estimates of systematic

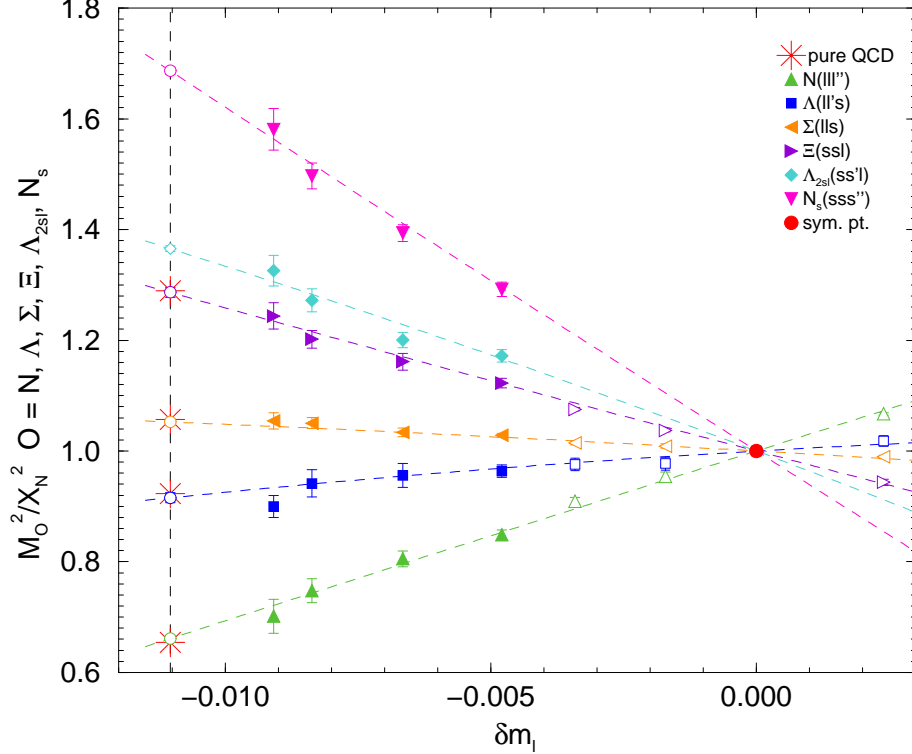


Figure 5: The baryon ‘fan’ plot for the ‘ Σ ’ and ‘ Λ ’ type particles \tilde{M}_O^2 ($O = N, \Lambda, \Sigma, \Xi, \Lambda_{2sl}, N_s$) versus δm_l . Filled up-triangles, squares, left-triangles, right-triangles, diamonds and down-triangles are the $N(lll'')$, $\Lambda(ll's)$, $\Sigma(lls)$, $\Xi(ssl)$, $\Lambda_{2sl}(ss'l)$ and $N_s(sss'')$ results respectively using $32^3 \times 64$ sized lattices. The common symmetric point is the filled circle. The opaque up-triangles, left-triangles, right-triangles, down-triangles are from comparison $24^3 \times 48$ sized lattices (and not used in the fits here). The vertical dashed line from eq. (79) is the $n_f = 2 + 1$ pure QCD physical point, with the opaque circles being the numerically determined pure QCD hadron mass ratios for $2 + 1$ quark flavours. For comparison, the stars represent the average of the (mass)² of $M_N^{*2}(lll'') = (M_n^{\text{exp } 2}(ddu) + M_p^{\text{exp } 2}(uud))/2$, $M_\Lambda^{*2}(lls) = M_{\Lambda_0}^{\text{exp } 2}(uds)$, $M_\Sigma^{*2}(lls) = (M_{\Sigma^-}^{\text{exp } 2}(dds) + M_{\Sigma^+}^{\text{exp } 2}(uus))/2$ and $M_\Xi^{*2}(ssl) = (M_{\Xi^-}^{\text{exp } 2}(ssd) + M_{\Xi_0}^{\text{exp } 2}(ssu))/2$.

errors of $\sim 1\%$ for finite volume, $\sim 1\%$ for the flavour symmetry expansion (it is also apparent from Fig. 5 that in the region we are interested in curvature effects are very small), $\sim 4\%$ as the chosen κ_0 and hence trajectory in the $m_s - m_l$ plane does not quite go through the physical point, while the systematic errors arising from a finite lattice spacing are small.

We find the results for the masses and splittings of Table 5. For the splittings, rather than using eq. (50) directly (i.e. the results of the left panel of Table 5) we use the expressions in section 4.2. As discussed there, for the central values it makes little difference, however the error is now better determined. For the

particle		exp [GeV]	result [GeV]		
M_p	uud	0.9383	0.9427(41)(40)	splitting	result [MeV]
M_n	ddu	0.9396	0.9454(40)(40)		
M_{Σ^+}	uus	1.1894	1.1874(23)(50)	$M_{\Sigma^-} - M_{\Sigma^+}$	7.27(22)(31)(109)
M_{Σ^-}	dds	1.1974	1.1947(22)(51)	$M_{\Xi^-} - M_{\Xi^0}$	4.57(19)(19)(68)
M_{Ξ^0}	ssu	1.3149	1.3145(49)(56)		
M_{Ξ^-}	ssd	1.3217	1.3191(48)(56)		

Table 5: Left panel: Baryon masses on the outer ring of the octet. The second column gives the quark content, while the third column, ‘exp’, gives the experimental masses from [2]. The last column, ‘result’, gives the result from this work. The first error is the statistical error, while the second is the total systematic error (in quadrature). X_N^{exp} from eq. (48) has been used to convert to GeV. Right panel: Baryon mass splittings on the outer ring. The third error is due to possible violations in Dashen’s theorem, section 6.3.

baryons on the outer ring of the octet the central values (both for masses and mass splittings) are in agreement with previous results, [1]. Note that we are not trying to compare the mass splittings with the experimental values, due to electromagnetic effects (not considered here).

7.2 $\Sigma - \Lambda$ mixing

We now turn to the result for $\Sigma - \Lambda$ mixing. In Table 6 we give the Σ^0 and Λ^0

particle		exp [GeV]	result [GeV]
M_{Σ^0}	uds	1.1926	1.1910(23)(51)
M_{Λ^0}	uds	1.1157	1.1109(54)(47)

Table 6: Σ^0 and Λ^0 masses. The same notation as for the left panel of Table 5.

masses. The $\Sigma^0 - \Lambda^0$ mass difference is

$$M_{\Sigma^0} - M_{\Lambda^0} = 79.44(7.37)(3.37) \text{ MeV}. \quad (80)$$

This is to be compared with the experimental result, eq. (2) of 76.96(2) MeV. As both particles have the same quark content (and are uncharged) we do not expect much electromagnetic contribution. Between the LO and NLO result there is only a few percent difference. Furthermore taking the difference between the $M_{\Sigma^0} - M_{\Lambda^0}$ mass splitting in Table 6 and $M_{\Sigma}^*(lls) - M_{\Lambda}^*(ll's)$ (i.e. the isospin limit) gives a vanishing contribution due to isospin breaking of ~ 0.01 MeV.

For the mixing angle we find

$$\tan 2\theta_{\Sigma\Lambda} = 0.0123(45)(25), \quad (81)$$

which, as anticipated, gives a very small angle, $\theta_{\Sigma\Lambda} \sim 0.006(3)$ rads $\lesssim 1^\circ$. Comparing with e.g. a quark model result [7] gives $\theta_{\Sigma\Lambda} \sim 0.01$ rads which is compatible with our result.

We note that the LO value of $\tan 2\theta_{\Sigma\Lambda}$ from eq. (59) is ~ 0.0191 so in this case with our determined \tilde{A} and \tilde{B} values for the $SU(3)$ flavour breaking expansion, there is some reduction in the value of the angle when going to NLO. However in distinction to the $\Sigma^0 - \Lambda^0$ mass difference the non-leading term is now much larger. This is because numerically $(\delta m_s - \delta m_u)(\delta m_s - \delta m_d)/3\delta m_s|^* \sim 0.0166$ to be compared with $3\delta m_u\delta m_d\delta m_s/2(\delta m_u^2 + \delta m_d^2 + \delta m_s^2)|^* \sim 0.0056$, which as expected from the discussion in section 4.2 is a factor 3 smaller. Thus the $SU(3)$ symmetry flavour breaking expansion for the mixing angle in eq. (59) appears less convergent than for the $\Sigma^0 - \Lambda^0$ mass difference, eq. (61). In order to account for this, we have increased the relative systematic error associated with the flavour symmetry expansion to $\sim 15\%$.

7.3 Conclusions

In this article we have extended our earlier work describing the QCD contribution to isospin-breaking effects in baryon masses [1] to now also include states with the same quantum numbers, in this case the Σ^0 and Λ^0 , and their isospin mixing. This gives a complete description of the $SU(3)$ flavour symmetry expansion of the (baryon) octet. As an example we have numerically investigated $\Sigma^0 - \Lambda^0$ mixing. While the mass splitting is reasonably well determined, to determine reliably the mixing angle will require a better determination of the $SU(3)$ symmetry flavour breaking expansion. An accurate determination of the mixing angle may be useful in baryonic semi-leptonic decays, see section 5. Further work in these directions is in progress.

Acknowledgements

The numerical configuration generation (using the BQCD lattice QCD program [18]) and data analysis (using the Chroma software library [19]) was carried out on the IBM BlueGene/Q using DIRAC 2 resources (EPCC, Edinburgh, UK), the BlueGene/P and Q at NIC (Jülich, Germany), the SGI ICE 8200 and Cray XC30 at HLRN (Berlin–Hannover, Germany) and on the NCI National Facility in Canberra, Australia (supported by the Australian Commonwealth Government). This investigation has been supported partly by the EU grants 227431 (Hadron Physics2) and 283826 (Hadron Physics3). JN was partially supported by EU grant 228398 (HPC-EUROPA2). HP is supported by DFG Grant: SCHI 422/9-1. JMZ is supported by the Australian Research Council grants FT100100005 and DP140103067. We thank all funding agencies.

Appendix

A Mass matrix symmetries – an example

To illustrate the transformations of the hadron mass matrices with an explicit example, let us write out in full the symmetry matrices for the transformation $u \leftrightarrow d$. A 3×3 $SU(3)$ matrix which exchanges the u and d quarks in the quark mass matrix eq. (8) is (see [12], eq. (128))

$$U = \exp \left\{ i \frac{\pi}{2} (\lambda_1 + \sqrt{3} \lambda_8) \right\} = \begin{pmatrix} 0 & -1 & 0 \\ -1 & 0 & 0 \\ 0 & 0 & -1 \end{pmatrix}. \quad (82)$$

(The minus signs ensure that $|U| = 1$, as required for an $SU(3)$ matrix). If we act with this U on the quark mass matrix it simply swaps the u and d quark masses.

$$U \begin{pmatrix} m_u & 0 & 0 \\ 0 & m_d & 0 \\ 0 & 0 & m_s \end{pmatrix} U^\dagger = \begin{pmatrix} m_d & 0 & 0 \\ 0 & m_u & 0 \\ 0 & 0 & m_s \end{pmatrix}. \quad (83)$$

To transform the baryon mass matrix we need an 8×8 matrix corresponding to eq. (82).

$$U = \exp \left\{ i \frac{\pi}{2} (\lambda_1 + \sqrt{3} \lambda_8) \right\} = \begin{pmatrix} 0 & 1 & 0 & 0 & 0 & 0 & 0 & 0 \\ 1 & 0 & 0 & 0 & 0 & 0 & 0 & 0 \\ 0 & 0 & 0 & 0 & 0 & 1 & 0 & 0 \\ 0 & 0 & 0 & -1 & 0 & 0 & 0 & 0 \\ 0 & 0 & 0 & 0 & 1 & 0 & 0 & 0 \\ 0 & 0 & 1 & 0 & 0 & 0 & 0 & 0 \\ 0 & 0 & 0 & 0 & 0 & 0 & 0 & 1 \\ 0 & 0 & 0 & 0 & 0 & 0 & 1 & 0 \end{pmatrix}. \quad (84)$$

found by using an 8×8 set of λ matrices (defined in [12], eq. (144)).

What happens to the baryon mass matrix when we rotate it with this U ?

$$U \begin{pmatrix} M_n^2 & 0 & 0 & 0 & 0 & 0 & 0 & 0 \\ 0 & M_p^2 & 0 & 0 & 0 & 0 & 0 & 0 \\ 0 & 0 & M_{\Sigma^-}^2 & 0 & 0 & 0 & 0 & 0 \\ 0 & 0 & 0 & M_{\Sigma\Sigma}^2 & M_{\Sigma\Lambda}^2 & 0 & 0 & 0 \\ 0 & 0 & 0 & M_{\Lambda\Sigma}^2 & M_{\Lambda\Lambda}^2 & 0 & 0 & 0 \\ 0 & 0 & 0 & 0 & 0 & M_{\Sigma^+}^2 & 0 & 0 \\ 0 & 0 & 0 & 0 & 0 & 0 & M_{\Xi^-}^2 & 0 \\ 0 & 0 & 0 & 0 & 0 & 0 & 0 & M_{\Xi^0}^2 \end{pmatrix} U^\dagger \quad (85)$$

$$= \begin{pmatrix} M_p^2 & 0 & 0 & 0 & 0 & 0 & 0 & 0 \\ 0 & M_n^2 & 0 & 0 & 0 & 0 & 0 & 0 \\ 0 & 0 & M_{\Sigma^+}^2 & 0 & 0 & 0 & 0 & 0 \\ 0 & 0 & 0 & M_{\Sigma\Sigma}^2 & -M_{\Sigma\Lambda}^2 & 0 & 0 & 0 \\ 0 & 0 & 0 & -M_{\Lambda\Sigma}^2 & M_{\Lambda\Lambda}^2 & 0 & 0 & 0 \\ 0 & 0 & 0 & 0 & 0 & M_{\Sigma^-}^2 & 0 & 0 \\ 0 & 0 & 0 & 0 & 0 & 0 & M_{\Xi^0}^2 & 0 \\ 0 & 0 & 0 & 0 & 0 & 0 & 0 & M_{\Xi^-}^2 \end{pmatrix}.$$

The n and p switch masses, as do the Σ^- and Σ^+ and the Ξ^0 and Ξ^- , all as expected when $u \leftrightarrow d$. In the central block, which tells us about the $\Sigma^0\Lambda^0$ sector, we see that the diagonal entries are unchanged, the off-diagonal entries have their sign flipped. This is just what should happen under $u \leftrightarrow d$, the eigenvalues (masses of the two states) will be the same, but the mixing angle will be reversed, $\theta_{\Sigma\Lambda} \rightarrow -\theta_{\Sigma\Lambda}$.

B The octet baryon mass matrix

B.1 The outer octet baryon masses

Here we discuss the mass matrix for partially quenched octet baryons in more detail than we could in the body of the paper. The arguments given here are similar to those given in [12] section B.4 for the meson mass matrix, and in section 4.1 for the partially quenched decuplet mass formula.

If we have a diagonal quark mass matrix, strangeness, ‘upness’ and ‘downness’ are all conserved quantum numbers. There are therefore only 10 non-zero entries in the 8×8 octet mass matrix, namely the 8 diagonal entries, and the two entries corresponding to $\Sigma - \Lambda$ mixing. $\Sigma - \Lambda$ mixing is permitted because both baryons have the same flavour content (uds); any other mixing would violate flavour conservation.

Since there are 10 non-zero entries, we can express the mass matrix in terms of a basis of ten 8×8 matrices. In [12] we classified these 10 matrices according to their symmetries, see Table 1. Seven of the matrices are diagonal, they can be read off directly from the table. The table also contains three matrices which mix the Σ and Λ .

In [12] we did not specify the mixing, as we were concentrating on the case of unbroken isospin symmetry, where there is no mixing. We now list the basis matrices N_i in full, including the three non-diagonal matrices.

This expansion is completely general. The coefficients K_i could be functions of the pseudoscalar meson masses if we are doing chiral perturbation theory, but in our case we will use polynomials of the bare quark masses. The symmetries of the coefficients must match the symmetries of the N_i matrices, for example if the matrix has symmetry A_1 or E^+ its coefficient must be even under $m_u \leftrightarrow m_d$, if it has symmetry A_2 or E^- it must be odd under this interchange.

We find the coefficients K_i by making all possible $SU(3)$ rotations on the quark mass matrix, and asking Mathematica to find the most general coefficients K_i which lead to a (mass matrix)² which transforms like eq. (11). Once we know the K_i we can then read off the individual baryon masses.

At first order in $\delta\mu_q$ we are only allowed singlet and octet matrices, so our M^2 matrix has to have the form

$$M^2 = \sum_{i=1}^5 K_i N_i, \quad (88)$$

with only 5 terms.

When we put this in the computer, we find that at first order, partially quenched, the most general form of the K_i consistent with eq. (11) is

$$\begin{aligned} K_1 &= M_0^2 + a_1(\delta\mu_u + \delta\mu_d + \delta\mu_s) \\ K_2 &= a_{8_a}(2\delta\mu_s - \delta\mu_u - \delta\mu_d) \\ K_3 &= a_{8_a}(\delta\mu_u - \delta\mu_d) \\ K_4 &= a_{8_b}(2\delta\mu_s - \delta\mu_u - \delta\mu_d) \\ K_5 &= 3a_{8_b}(\delta\mu_u - \delta\mu_d). \end{aligned} \quad (89)$$

Much of this could be anticipated on general grounds. The form of the polynomials can be read off from Table 2. Since N_2 and N_3 are part of the same representation, we know that K_2 and K_3 are not independent, they must both be proportional to the same coefficient. Likewise, K_4 and K_5 must share a coefficient. The only slightly non-trivial features in eq. (89) are the proportionality factors relating K_3 and K_5 to K_2 and K_4 , (factors of 1 and 3). These have to be found by considering a symmetry operation that mixes N_2 with N_3 , and N_4 with N_5 . Examples of such operations are the interchanges $\delta\mu_d \leftrightarrow \delta\mu_s$ or $\delta\mu_u \leftrightarrow \delta\mu_s$, or the cyclic operation $\delta\mu_u \rightarrow \delta\mu_d \rightarrow \delta\mu_s \rightarrow \delta\mu_u$.

We are not quite finished, there is one extra constraint coming from partial quenching. If we calculate the neutron mass from eq. (89) we have

$$\begin{aligned} M_n^2 &= (M^2)_{11} = K_1 - K_2 - K_3 + K_4 - K_5 \\ &= M_0^2 + \delta\mu_u(a_1 - 4a_{8_b}) + \delta\mu_d(a_1 + 2a_{8_a} + 2a_{8_b}) + \delta\mu_s(a_1 - 2a_{8_a} + 2a_{8_b}). \end{aligned} \quad (90)$$

However, we know that although the neutron can depend in a symmetric manner on all the sea quark masses, there is no way it can have any information about

the mass of the partially quenched valence s quark, so the final term should not occur. We remove this unwanted term by imposing the constraint

$$a_1 - 2a_{8_a} + 2a_{8_b} = 0, \quad (91)$$

leaving

$$M_n^2 = M_0^2 + a_1(2\delta\mu_d + \delta\mu_u) - 4a_{8_b}(\delta\mu_u - \delta\mu_d). \quad (92)$$

Finally, we define new parameters

$$A_1 \equiv a_1, \quad A_2 \equiv -4a_{8_b}, \quad (93)$$

simply to tidy up the result,

$$M_n^2 = M_0^2 + A_1(2\delta\mu_d + \delta\mu_u) + A_2(\delta\mu_u - \delta\mu_d). \quad (94)$$

The constraint eq. (91) doesn't only remove the unphysical term from the neutron mass formula, it automatically does the same for all the outer baryons, giving them all a mass formula independent of the absent valence quark mass:

$$M^2(aab) = M_0^2 + A_1(2\delta\mu_a + \delta\mu_b) + A_2(\delta\mu_b - \delta\mu_a). \quad (95)$$

In terms of the new parameters eq. (93) the final expressions for the K_i are

$$\begin{aligned} K_1 &= M_0^2 + A_1(\delta\mu_u + \delta\mu_d + \delta\mu_s) \\ K_2 &= \frac{1}{4}(2A_1 - A_2)(2\delta\mu_s - \delta\mu_u - \delta\mu_d) \\ K_3 &= \frac{1}{4}(2A_1 - A_2)(\delta\mu_u - \delta\mu_d) \\ K_4 &= -\frac{1}{4}A_2(2\delta\mu_s - \delta\mu_u - \delta\mu_d) \\ K_5 &= -\frac{3}{4}A_2(\delta\mu_u - \delta\mu_d). \end{aligned} \quad (96)$$

At higher order we proceed in the same way, finding the analogue of eq. (89) by considering all possible rotations of the quark matrix, and then the analogue of eq. (96) by imposing the partially quenched constraint that the absent valence quark can not appear in the mass formula for $M^2(aab)$. Of course at higher order more of the K_i appear; at quadratic order the 27-plet enters, and we need K_1 to K_8 ; at cubic or higher order, all ten K_i appear. Also, the expressions for each K_i coefficient become longer, as can be seen from Table 2. It would be difficult to carry out the calculation by hand, but with the help of a computer we can find all the K_i , and thus the complete M^2 matrix.

B.2 The $\Sigma - \Lambda$ mass matrix

In this paper we are primarily interested in the $\Sigma - \Lambda$ sector. Let us concentrate on the 2×2 block of M^2 responsible for these two 'central' baryons. From eq. (86) we read off

$$\begin{pmatrix} M_{\Sigma\Sigma}^2 & M_{\Sigma\Lambda}^2 \\ M_{\Lambda\Sigma}^2 & M_{\Lambda\Lambda}^2 \end{pmatrix} = \begin{pmatrix} K_1 - 2K_4 - 3K_6 + 3K_7 & \frac{2}{\sqrt{3}}K_5 - \sqrt{3}K_8 - iK_{10} \\ \frac{2}{\sqrt{3}}K_5 - \sqrt{3}K_8 + iK_{10} & K_1 + 2K_4 - 3K_6 - 3K_7 \end{pmatrix}. \quad (97)$$

A tidier way to write this is to split the matrix up according to the behaviour of the various terms under the permutation group, eq. (17)

$$\begin{pmatrix} M_{\Sigma\Sigma}^2 & M_{\Sigma\Lambda}^2 \\ M_{\Lambda\Sigma}^2 & M_{\Lambda\Lambda}^2 \end{pmatrix} = P_{A_1} \begin{pmatrix} 1 & 0 \\ 0 & 1 \end{pmatrix} + P_{E^+} \begin{pmatrix} 1 & 0 \\ 0 & -1 \end{pmatrix} + P_{E^-} \begin{pmatrix} 0 & 1 \\ 1 & 0 \end{pmatrix} + P_{A_2} \begin{pmatrix} 0 & -i \\ i & 0 \end{pmatrix}, \quad (98)$$

where P_G means a function of the quark masses with the symmetry G under the S_3 permutation group. The individual terms in this expansion are given by

$$\begin{aligned} P_{A_1} &= K_1 - 3K_6 \\ P_{E^+} &= -2K_4 + 3K_7 \\ P_{E^-} &= \frac{2}{\sqrt{3}}K_5 - \sqrt{3}K_8 \\ P_{A_2} &= K_{10}. \end{aligned} \quad (99)$$

In the main part of the paper we give the full cubic expression for the P_G , derived from the full results for the K_i .

C Scale independent quantities to NNLO

For completeness we list here the results of section 4 to NNLO.

$$\begin{aligned} X_N^2 &= M_0^2 + \frac{1}{6}(B_0 + B_1 + B_3)(\delta m_u^2 + \delta m_d^2 + \delta m_s^2) \\ &\quad + (C_0 - C_3 + 3C_5)\delta m_u \delta m_d \delta m_s. \end{aligned} \quad (100)$$

$$C_0 \rightarrow \tilde{C}_0 = \frac{C_3 - 3C_5}{M_0^2} = \tilde{C}_3 - 3\tilde{C}_5. \quad (101)$$

$$\begin{aligned} \tilde{P}_{A_1} &= 1 + 3\tilde{A}_1\delta\bar{\mu} \\ &\quad + \frac{1}{6}\tilde{B}_0(\delta m_u^2 + \delta m_d^2 + \delta m_s^2) + \tilde{B}_1(\delta\mu_a^2 + \delta\mu_b^2 + \delta\mu_c^2) \\ &\quad + \frac{1}{4}(\tilde{B}_3 + \tilde{B}_4) \left[(\delta\mu_c - \delta\mu_a)^2 + (\delta\mu_c - \delta\mu_b)^2 + (\delta\mu_a - \delta\mu_b)^2 \right] \\ &\quad + \tilde{C}_0\delta m_u \delta m_d \delta m_s + 3\tilde{C}_1\delta\bar{\mu}(\delta m_u^2 + \delta m_d^2 + \delta m_s^2) \\ &\quad - 4(\tilde{C}_5 + \tilde{C}_7)\delta\mu_a\delta\mu_b\delta\mu_c + \frac{1}{2}\tilde{Q}_1(\delta\mu_c + \delta\mu_a)(\delta\mu_c + \delta\mu_b)(\delta\mu_a + \delta\mu_b) \\ &\quad + \frac{27}{4}\tilde{Q}_2(\delta\mu_c - \delta\bar{\mu})(\delta\mu_a - \delta\bar{\mu})(\delta\mu_b - \delta\bar{\mu}), \\ \tilde{P}_{E^+} &= \frac{3}{2}\tilde{A}_2(\delta\mu_c - \delta\bar{\mu}) \\ &\quad + \frac{1}{2}\tilde{B}_2(2\delta\mu_c^2 - \delta\mu_a^2 - \delta\mu_b^2) \\ &\quad + \frac{1}{4}(\tilde{B}_3 - \tilde{B}_4) \left[(\delta\mu_c - \delta\mu_a)^2 + (\delta\mu_c - \delta\mu_b)^2 - 2(\delta\mu_a - \delta\mu_b)^2 \right] \\ &\quad + \frac{3}{2}\tilde{C}_2(\delta\mu_c - \delta\bar{\mu})(\delta m_u^2 + \delta m_d^2 + \delta m_s^2) + 6(\tilde{C}_3 - \tilde{C}_4)(\delta\mu_c - \delta\bar{\mu})\delta\bar{\mu}^2 \\ &\quad + \frac{1}{6}\tilde{Q}_3 \left[(\delta\mu_c - \delta\mu_a)^2 + (\delta\mu_c - \delta\mu_b)^2 - 2(\delta\mu_a - \delta\mu_b)^2 \right] \delta\bar{\mu} \end{aligned}$$

$$\begin{aligned}
& +\frac{1}{8}\tilde{Q}_4(\delta\mu_c - \delta\bar{\mu})(\delta\mu_a^2 + \delta\mu_b^2 + \delta\mu_c^2 - 3\delta\bar{\mu}^2), \\
\tilde{P}_{E^-} = & \frac{\sqrt{3}}{2}\tilde{A}_2(\delta\mu_b - \delta\mu_a) \\
& +\frac{\sqrt{3}}{2}\tilde{B}_2(\delta\mu_b^2 - \delta\mu_a^2) + \frac{\sqrt{3}}{4}(\tilde{B}_3 - \tilde{B}_4) \left[(\delta\mu_c - \delta\mu_b)^2 - (\delta\mu_c - \delta\mu_a)^2 \right] \\
& +\frac{\sqrt{3}}{2}\tilde{C}_2(\delta\mu_b - \delta\mu_a)(\delta m_u^2 + \delta m_d^2 + \delta m_s^2) + 2\sqrt{3}(\tilde{C}_3 - \tilde{C}_4)(\delta\mu_b - \delta\mu_a)\delta\bar{\mu}^2 \\
& +\frac{1}{8\sqrt{3}}\tilde{Q}_4(\delta\mu_b - \delta\mu_a)(\delta\mu_a^2 + \delta\mu_b^2 + \delta\mu_c^2 - 3\delta\bar{\mu}^2) \\
& -\frac{\sqrt{3}}{2}\tilde{Q}_3(\delta\mu_b - \delta\mu_a)(\delta\mu_c - \delta\bar{\mu})\delta\bar{\mu}, \\
\tilde{P}_{A_2} = & \tilde{C}_9(\delta\mu_c - \delta\mu_a)(\delta\mu_c - \delta\mu_b)(\delta\mu_a - \delta\mu_b), \tag{102}
\end{aligned}$$

where

$$\begin{aligned}
\tilde{Q}_1 & \equiv 2\tilde{C}_3 + \tilde{C}_5 + \tilde{C}_7 \\
\tilde{Q}_2 & \equiv \tilde{C}_5 - \tilde{C}_6 + \tilde{C}_7 + \tilde{C}_8 \\
\tilde{Q}_3 & \equiv 4(\tilde{C}_3 - \tilde{C}_4) + 3(\tilde{C}_5 - \tilde{C}_7) \\
\tilde{Q}_4 & \equiv 2(\tilde{C}_3 - \tilde{C}_4) + 3(\tilde{C}_5 - \tilde{C}_7) - 9(\tilde{C}_6 + \tilde{C}_8), \tag{103}
\end{aligned}$$

and $\delta\bar{\mu} \equiv \frac{1}{3}(\delta\mu_a + \delta\mu_b + \delta\mu_c)$.

$$\begin{aligned}
\tilde{M}^{N^2}(aab) = & 1 + \tilde{A}_1(2\delta\mu_a + \delta\mu_b) + \tilde{A}_2(\delta\mu_b - \delta\mu_a) \\
& +\tilde{B}_0\delta m_l^2 + \tilde{B}_1(2\delta\mu_a^2 + \delta\mu_b^2) + \tilde{B}_2(\delta\mu_b^2 - \delta\mu_a^2) + \tilde{B}_3(\delta\mu_b - \delta\mu_a)^2 \\
& -2\tilde{C}_0\delta m_l^3 + 6[\tilde{C}_1(2\delta\mu_a + \delta\mu_b) + \tilde{C}_2(\delta\mu_b - \delta\mu_a)]\delta m_l^2 \\
& +\tilde{C}_3(\delta\mu_a + \delta\mu_b)^3 + \tilde{C}_4(\delta\mu_a + \delta\mu_b)^2(\delta\mu_a - \delta\mu_b) \\
& +\tilde{C}_5(\delta\mu_a + \delta\mu_b)(\delta\mu_a - \delta\mu_b)^2 + \tilde{C}_6(\delta\mu_a - \delta\mu_b)^3, \tag{104}
\end{aligned}$$

and

$$\begin{aligned}
\tilde{M}^{\Lambda^2}(aa'b) = & 1 + \tilde{A}_1(2\delta\mu_a + \delta\mu_b) - \tilde{A}_2(\delta\mu_b - \delta\mu_a) \\
& +\tilde{B}_0\delta m_l^2 + \tilde{B}_1(2\delta\mu_a^2 + \delta\mu_b^2) - \tilde{B}_2(\delta\mu_b^2 - \delta\mu_a^2) + \tilde{B}_4(\delta\mu_b - \delta\mu_a)^2 \\
& -2\tilde{C}_0\delta m_l^3 + 6[\tilde{C}_1(2\delta\mu_a + \delta\mu_b) - \tilde{C}_2(\delta\mu_b - \delta\mu_a)]\delta m_l^2 \\
& +\tilde{C}_3(\delta\mu_a + \delta\mu_b)^3 + (\tilde{C}_4 - 2\tilde{C}_3)(\delta\mu_a + \delta\mu_b)^2(\delta\mu_b - \delta\mu_a) \\
& +\tilde{C}_7(\delta\mu_a + \delta\mu_b)(\delta\mu_b - \delta\mu_a)^2 + \tilde{C}_8(\delta\mu_b - \delta\mu_a)^3. \tag{105}
\end{aligned}$$

Eq. (78) is generalised to

$$\begin{aligned}
D_{\Sigma\Lambda}^{\text{sym}} = & \tilde{A}_2 + \tilde{B}_2(\delta\mu_a + \delta\mu_b) \tag{106} \\
& +6\tilde{C}_2\delta m_l^2 + (\tilde{C}_3 - \tilde{C}_4)(\delta\mu_a + \delta\mu_b)^2 - \frac{1}{2}(\tilde{C}_6 + \tilde{C}_8)(\delta\mu_b - \delta\mu_a)^2.
\end{aligned}$$

D Tables

Table 7 gives the PQ baryon masses when all three valence quarks are different, while Table 8 gives the masses when two valence quarks are mass degenerate. The three sea quark kappa values are κ_l (twice) and κ_s , while the valence quark values are $\kappa_a, \kappa_b, \kappa_c$.

κ_l	κ_s	κ_a	κ_b	κ_c	V	$M_H(abc)$	$M_L(abc)$
0.120900	0.120900	0.120900	0.120512	0.120000	$32^3 \times 64$	0.5698(31)	0.5580(26)
0.120900	0.120900	0.121095	0.120512	0.120000	$32^3 \times 64$	0.5577(38)	0.5433(31)
0.120900	0.120900	0.121095	0.120900	0.120000	$32^3 \times 64$	0.5300(45)	0.5123(39)
0.120900	0.120900	0.121095	0.120900	0.120512	$32^3 \times 64$	0.4892(48)	0.4777(43)
0.120900	0.120900	0.120900	0.120000	0.118000	$32^3 \times 64$	0.7278(26)	0.7087(24)

Table 7: Baryon masses used with valence quark kappa values $\kappa_a \neq \kappa_b \neq \kappa_c$.

κ_l	κ_s	κ_a	κ_b	κ_c	V	$M_\Sigma(aab)$	$M_\Lambda(aa'b)$
0.120900	0.120900	0.120000	0.120000	0.118000	$32^3 \times 64$	0.7789(23)	0.7684(23)
0.120900	0.120900	0.120000	0.120000	0.120000	$32^3 \times 64$	0.6588(23)	
0.120900	0.120900	0.120000	0.120000	0.120512	$32^3 \times 64$	0.6232(24)	0.6290(26)
0.120900	0.120900	0.120000	0.120000	0.120900	$32^3 \times 64$	0.5945(26)	0.6058(29)
0.120900	0.120900	0.120512	0.120512	0.120000	$32^3 \times 64$	0.5945(25)	0.5892(28)
0.120900	0.120900	0.120512	0.120512	0.120512	$32^3 \times 64$	0.5564(27)	
0.120900	0.120900	0.120512	0.120512	0.120900	$32^3 \times 64$	0.5247(30)	0.5328(34)
0.120900	0.120900	0.120900	0.120900	0.116000	$32^3 \times 64$	0.7811(34)	0.7438(33)
0.120900	0.120900	0.120900	0.120900	0.118000	$32^3 \times 64$	0.6739(33)	0.6442(32)
0.120900	0.120900	0.120900	0.120900	0.120000	$32^3 \times 64$	0.5435(32)	0.5277(37)
0.120900	0.120900	0.120900	0.120900	0.120512	$32^3 \times 64$	0.5031(35)	0.4938(41)
0.120900	0.120900	0.120000	0.120000	0.121095	$32^3 \times 64$	0.5806(31)	0.5960(37)
0.120900	0.120900	0.120512	0.120512	0.121095	$32^3 \times 64$	0.5086(36)	0.5234(46)
0.120900	0.120900	0.120900	0.120900	0.121095	$32^3 \times 64$	0.4502(55)	0.4606(80)
0.120900	0.120900	0.121095	0.121095	0.120000	$32^3 \times 64$	0.5226(65)	0.5029(123)
0.120900	0.120900	0.121095	0.121095	0.120512	$32^3 \times 64$	0.4838(77)	0.4744(177)
0.120900	0.120900	0.121095	0.121095	0.120900	$32^3 \times 64$	0.4519(42)	0.4613(300)
0.121040	0.120620	0.120620	0.120620	0.120620	$32^3 \times 64$	0.5265(16)	
0.121040	0.120620	0.120620	0.120620	0.121040	$32^3 \times 64$	0.4907(21)	0.5014(30)
0.121040	0.120620	0.121040	0.121040	0.120620	$32^3 \times 64$	0.4697(33)	0.4547(43)
0.121040	0.120620	0.121040	0.121040	0.121040	$32^3 \times 64$	0.4267(50)	
0.121095	0.120512	0.120512	0.120512	0.120512	$32^3 \times 64$	0.5446(16)	
0.121095	0.120512	0.120512	0.120512	0.121095	$32^3 \times 64$	0.4971(21)	0.5054(31)
0.121095	0.120512	0.121095	0.121095	0.120512	$32^3 \times 64$	0.4690(37)	0.4510(58)
0.121095	0.120512	0.121095	0.121095	0.121095	$32^3 \times 64$	0.4140(61)	
0.121145	0.120413	0.120413	0.120413	0.120413	$32^3 \times 64$	0.5682(13)	
0.121145	0.120413	0.120413	0.120413	0.121145	$32^3 \times 64$	0.5092(19)	0.5239(23)
0.121145	0.120413	0.121145	0.121145	0.120413	$32^3 \times 64$	0.4761(39)	0.4507(65)
0.121145	0.120413	0.121145	0.121145	0.121145	$32^3 \times 64$	0.4016(89)	
0.120900	0.120900	0.120900	0.120900	0.120900	$32^3 \times 64$	0.4673(27)	
0.121166	0.120371	0.120371	0.120371	0.120371	$48^3 \times 96$	0.5730(26)	
0.121166	0.120371	0.120371	0.120371	0.121166	$48^3 \times 96$	0.5083(35)	0.5247(46)
0.121166	0.120371	0.121166	0.121166	0.120371	$48^3 \times 96$	0.4680(66)	0.4322(66)
0.121166	0.120371	0.121166	0.121166	0.121166	$48^3 \times 96$	0.3817(123)	

Table 8: Baryon masses used with valence quark kappa values $\kappa_a = \kappa_b$.

References

- [1] R. Horsley, J. Najjar, Y. Nakamura, D. Pleiter, P. E. L. Rakow, G. Schierholz and J. M. Zanotti, [QCDSF–UKQCD Collaborations], *Phys. Rev.* **D86** (2012) 114511, [[arXiv:1206.3156 \[hep-lat\]](#)].
- [2] K. A. Olive et al. (Particle Data Group), *Chin. Phys.* **C38** (2014) 090001.
- [3] N. H. Christ, C. Dawson, T. Izubuchi, C. Jung, Q. Liu, R. D. Mawhinney, C. T. Sachrajda, A. Soni and R. Zhou, [RBC and UKQCD Collaborations], *Phys. Rev. Lett.* **105** (2010) 241601, [[arXiv:1002.2999 \[hep-lat\]](#)].
- [4] J. J. Dudek, R. G. Edwards, B. Joó, M. J. Peardon, D. G. Richards and C. E. Thomas, [Hadron Spectrum Collaboration], *Phys. Rev.* **D83** (2011) 111502, [[arXiv:1102.4299 \[hep-lat\]](#)].
- [5] E. B. Gregory, A. C. Irving, C. M. Richards, C. McNeile, [UKQCD Collaboration], *Phys. Rev.* **D86** (2012) 014504, [[arXiv:1112.4384 \[hep-lat\]](#)].
- [6] C. Michael, K. Ottnad and C. Urbach, [ETM collaboration], *Phys. Rev. Lett.* **111** (2013) 181602, [[arXiv:1310.1207 \[hep-lat\]](#)].
- [7] N. Isgur, *Phys. Rev.* **D 21** (1980) 779; erratum **D23** (1981) 817.
- [8] J. Gasser and H. Leutwyler, *Phys. Rept.* **87** (1982) 77.
- [9] S.-L. Zhu, W.-Y. P. Hwang and Z.-S. Yang, *Phys. Rev.* **D57** (1998) 1524, [[arXiv:hep-ph/9802321](#)].
- [10] N. Yagisawa, T. Hatsuda and A. Hayashigaki, *Nucl. Phys.* **A699** (2002) 665, [[arXiv:hep-ph/0107023](#)].
- [11] P. W. Atkins, M. S. Child and C. S. G. Phillips, *Tables for Group Theory*, Oxford University Press, 1970.
- [12] W. Bietenholz, V. Bornyakov, M. Göckeler, R. Horsley, W. G. Lockhart, Y. Nakamura, H. Perlt, D. Pleiter, P. E. L. Rakow, G. Schierholz, A. Schiller, T. Streuer, H. Stüben, F. Winter and J. M. Zanotti, [QCDSF–UKQCD Collaboration], *Phys. Rev.* **D84** (2011) 054509, [[arXiv:1102.5300 \[hep-lat\]](#)].
- [13] D. Griffiths, *Introduction to Elementary Particles*, John Wiley, 1987.
- [14] Y.-B. Yang, Y. Chen, A. Alexandru, S.-J. Dong, T. Draper, M. Gong, F. X. Lee, A. Li, K.-F. Liu, Z. Liu and M. Lujan, [χ QCD Collaboration], [arXiv:1410.3343 \[hep-lat\]](#).
- [15] S. Coleman and S. L. Glashow, *Phys. Rev. Lett.* **6** (1961) 423.

- [16] G. Karl, *Phys. Lett.* **B328** (1994) 149 [Erratum-ibid. **B341** (1995) 449].
- [17] N. Cundy, M. Göckeler, R. Horsley, T. Kaltenbrunner, A. D. Kennedy, Y. Nakamura, H. Perlt, D. Pleiter, P. E. L. Rakow, A. Schäfer, G. Schierholz, A. Schiller, H. Stüben, and J. M. Zanotti, [QCDSF–UKQCD Collaboration], *Phys. Rev. D* **79** (2009) 094507, [arXiv:0901.3302 [hep-lat]].
- [18] Y. Nakamura and H. Stüben, *PoS(Lattice 2010)* **040**, arXiv:1011.0199 [hep-lat].
- [19] R. G. Edwards and B. Joó, *Nucl. Phys. Proc. Suppl.* **140** (2005) 832 [arXiv:hep-lat/0409003].